

TECHNICAL MANUAL
ILLUSTRATED PARTS BREAKDOWN
SHELTER, RIGID
S611/T
PART NUMBER 7001027-504

TEXAS INSTRUMENTS INCORPORATED
F19628-78-C-0185

Each transmittal of this document outside of the Department of Defense must have approval of the issuing Service.

Published under authority of the Secretary of the Air Force.

LIST OF EFFECTIVE PAGES

Insert latest changed pages; dispose of superseded pages in accordance with applicable regulations.

NOTE: On a changed page, the portion of the text affected by the latest change is indicated by a vertical line, or other change symbol, in the outer margin of the page. Changes to illustrations are indicated by miniature pointing hands. Changes to wiring diagrams are indicated by shaded areas.

Total number of pages in this manual is 44 consisting of the following:

Page #	Change
No.	No.
Title	0
A	0
i	0
ii Blank	0
1-1 - 1-14	0
2-1 - 2-15	0
2-16 Blank	0
3-1 - 3-8	0
4-1	0
4-2 Blank	0

Zero in this column indicates an original page.

TABLE OF CONTENTS

Section	Title	Page
I.	INTRODUCTION TO THE ILLUSTRATED PARTS BREAKDOWN	1-1
II.	MAINTENANCE PARTS LIST.....	2-1
	Rigid Shelter	2-2
	Electrical Installation.....	2-5
	Personnel and Door Stop Door Installation	2-7
	Emergency Door Installation	2-11
	Clearance Light Installation	2-14
III.	NUMERICAL INDEX	3-1
IV.	REFERENCE DESIGNATION INDEX	4-1

SECTION I

INTRODUCTION TO THE ILLUSTRATED PARTS BREAKDOWN

1-1. SCOPE.

1-2. This Illustrated Parts Breakdown lists and illustrates the Shelter, Rigid S611/T, part number 7001027-504.

1-3. RELATED PUBLICATIONS.

1-4. The following related publications contain maintenance and overhaul instructions for the equipment covered by this Illustrated Parts Breakdown.

T.O. 10M1-7-8-1	Operating & Maintenance Instruction Manual
TM 11-5895-1044-14	Operating & Maintenance Instruction Manual
TM 08045-15/12	Operating & Maintenance Instruction Manual

1-5. SECTION I-INTRODUCTION TO THE ILLUSTRATED PARTS BREAKDOWN.

1-6. Section I defines and explains the use of the Illustrated Parts Breakdown.

1-7. SECTION II-MAINTENANCE PARTS LIST.

1-8. The Maintenance Parts List (MPL) consists of the Shelter, Rigid S611 /T broken down into assemblies, subassemblies, and detail parts. The following paragraphs define the use of each column.

1-9. **FIGURE AND INDEX NUMBER.** The column contains the numerically assigned figure numbers for each illustration. Within each figure, numerically arranged index numbers are assigned to aid in locating a part in the Maintenance Parts List and the associated illustrations. If more than one sheet is required to illustrate the assembly, the sheet number will follow the figure number separated by a diagonal (/).

1-10. **PART NUMBER.** The numbers listed in this column are those pertaining to the manufacturer, except in the case of Government standard parts (AF, AN, MS, JAN, MIL, and USN), and are used exclusively to identify parts. Parts which are used exactly as purchased, i.e., in a condition ready for installation, are listed in the Part No. column by the manufacturer's part number with the Texas Instruments specification control number parenthetically following the description in the description column. An asterisk (*) following a part number signifies that the part must be requisitioned in accordance with the requirements of AFR 6-4. A number sign (#) following a part number identifies the item as GFE/CFE and signifies that a detailed parts breakdown appears in a separate manual. Reference should be made to paragraph 1-4 for related publications. In general, assemblies and parts installed at the time the end item was manufactured are listed and identified in the manual. When an assembly or part (including vendor items), different from the original, was installed during the manufacture of later items, series, or blocks, all assemblies or parts are listed and identified by a "Usable-on" code (see 1-15). However, when the original assembly or part does not have continued application (no spares of the original were procured or such spares are no longer authorized for replacement), only the preferred assembly or part is listed. Also,

when an assembly or part was installed during modification, and the original does not have continued application, only the preferred item is listed. Interchangeable and substitute assemblies and parts, subsequently authorized by the Government, are not listed in this manual; such items are identified by information available through the Interchangeable and Substitute (I& S) Data Systems. Refer to T.O. 00-25-184.

1-11. **FEDERAL SUPPLY CODE FOR MANUFACTURERS (FSCM).** The FSCM identifies the manufacturer or Government agency whose number appears in the Part Number column. When an FSCM does not appear in the current issue of H4-1, H4-2, or H4-3 Cataloging Handbooks, the word "None" will appear in the FSCM column and the name and address of the manufacturer or Government agency will be shown in parentheses following the item description. See table 1-1 for FSCM information.

1-12. **DESCRIPTION.** This column contains the approval item name for each part and distinguishing modifiers, where applicable. The Maintenance Parts List is indented to indicate item relationship. Indention is indicated by leader points or period, one point or period signifying one indention. When the nomenclature exceeds a single line presentation, the second or following lines are indented two additional indents from the first line. The term "NHA" (Next Higher Assembly) indicates the assembly of the item from which reference is made. Texas Instruments Incorporated Equipment Group specification control numbers parenthetically follow the description where applicable.. When the word "None" appears in the FSCM column, the name and address of the manufacturer or Government agency parenthetically follows the description.

Example of indention procedure:

- 1 2 3 4 5 6 7 Description
- Article, Main group, or Main assembly
- .Assembly
- .Attaching parts for assembly (AP)
- ..Detail parts for assembly
- ..Subassemblies
- ..Attaching parts for subassemblies (AP)
- ...Detail parts for subassemblies
- ...Sub-subassemblies
- ...Attaching parts for sub-subassemblies (AP)
-Detail parts for sub-subassemblies

1-13. **UNITS PER ASSEMBLY.** Shown in this column is the number of units required per assembly, per subassembly, and per sub-subassembly, as applicable. If more than one assembly is required, the total number of such assemblies is shown. For detail or subassembly parts of an assembly, the quantity required for one assembly is shown. The unit of measure is "each" unless otherwise specified in the description column. The notation "REF" in the Units Per Assembly column indicates that the quantity of the referenced assembly at any one location can be determined by referring to the next higher assembly figure number which parenthetically follows the nomenclature of the item.

1-14. **ATTACHING PARTS.** Attaching parts are listed immediately beneath the item to be attached and preceding any detail parts of the item. Identification of attaching parts is by the parenthetic code (AP) following the description of the part. Attaching parts are listed at the same indention as the part they attach.

Example

PLATE
SCREW (AP)
WASHER (AP)
CONNECTOR

1-15. **USABLE ON CODES.** Part variations within groups or models are identified by a symbol in the Usable on Code column of the Maintenance Parts List. See table 1-3 for explanation. The absence of a code or symbol in the Usable on Code column indicates that the parts so shown are usable as replacements on all models or groups covered by this publication.

1-16. **SOURCE, MAINTENANCE, AND RECOVERABILITY (SMR) CODE.** This manual contains Joint Military Services Uniform SMR codes only. Definitions of these SMR codes are available in T.O. 00-25-195.

1-17. SECTION III-NUMERICAL INDEX.

1-18. The Numerical Index contains a complete alphanumeric listing of all the part numbers appearing in the Maintenance Parts List with applicable figure and index numbers for each part. Part numbers listed that do not appear in the Maintenance Parts List are followed by cross-reference note to a new part number, next higher assembly or numbers under which parts are to be requisitioned.

1-19. **PART NUMBER.** This column contains all the part numbers listed in accordance with the alphanumeric part number filing system described below.

1-20. Part number arrangement starts with the left-hand figure or letter and continues from left to right, one position at a time.

1-21. The order of precedence for the first position is as follows:

- a. Letters A through Z
- b. Numeral 0 through 9

1-22. The order of precedence in the second and succeeding positions is as follows:

- a. Space
- b. Symbol
- c. Letter A through Z
- d. Numerals 0 through 9

1-23. **NATIONAL STOCK NUMBER.** This column contains the assigned National Stock Number for the part number. When a National Stock Number has not been assigned, a class code will be used for the U.S. Marine Corps and U.S. Army only.

1-24. **FIGURE AND INDEX NUMBER.** This column contains figure and index numbers which are used to locate parts in the Maintenance Parts List. When an item is not assigned an index number, the figure and index number of the preceding part in the Maintenance Parts List is used. The letter "F" precedes the figure number, i.e., F7-6, to mean "follows." The entry 7/2-81 means that reference is made to index-81 on illustration sheet 2 of figure 7.

1-25. QUANTITY PER END ITEM. The quantity shown in this column is the total quantity required per end item. When more than one model, type, or configuration of the end item is covered in the Illustrated Parts Breakdown, and the total quantity for a part differs, the largest quantity for any one end item is shown.

1-26. USMC UNIQUE SMR CODES. This column lists only USMC SMR codes that differ from the SMR codes shown in the Maintenance Parts List.

1-27. USMC SPECIAL STOCK INDICATOR (SSI) CODE. This column lists the conditions for stocking unique maintenance parts [those assigned NSNs and coded in the P series (source) of the SMR code]. The SSI codes are as follows:

a. No code-Indicates that the part may or may not be authorized in initial allowances to using or supporting organizations. The initial allowance is explained in the Replacement (REPL) Factor description which follows;

b. I Applied to maintenance parts for which predicted consumption would not warrant inclusion in mount-out but, for which a quantity of 1 is authorized as insurance for mount-out using a 360-day criteria based on the total density of equipment employed by the DIV/WING team. Mount allowances, so authorized, will be stocked by the FSR or MWSG for Marine wing peculiar equipment, as applicable.

c. D-Applied to maintenance parts that are not considered critical or essential stockage; therefore, they are not authorized in initial allowances. However, these items are stocked within the supply system and may be requisitioned when needed.

d. T -Indicates that the part is authorized in garrison operating allowances to comply with state and local laws; however, the part is not authorized in mount-out since it is not combat essential.

1-28. USMC REPL FACTOR. This column lists the REPL factor assigned to each national stock numbered maintenance repair part. The REPL factor is a decimal number which indicates the average rate at which the type of part so coded has been used by Marine Corps field units, or the rate at which design engineers anticipate the part will fail, wear out, or otherwise require replacement. All computations are based on a replacement period of 1 year.

a. Initial authorized stockage levels of consumable and salvageable parts for an organization are to be computed for predicted consumption based on the number of parts employed and/or supported by an organization within the number of days for which stockage is authorized. In computing garrison operating stock or mount-out, authorized levels can be determined by the requiring Marine Corps unit by multiplying the REPL factor times the quantity used per equipment, times the number of end items employed by the using organization or supported by the service organization, times the authorized day level expressed in months and divided by 12. Specific formulas and examples are provided in Marine Corps Order (MCO) P4400.79. The REPL factors used in initial stockage computations should be revised, if warranted, after significant use is experienced, in accordance with guidelines of MCO 4400.32A. Use the following formula for revising the REPL factors based on actual use. W equals the revised REPL factor; X is the usage experience of 1 year; A is the application per equipment; and B is the number of equipments supported.

$$W = \frac{X}{A + B1-4}$$

b. Initial allowances for maintenance float items (recoverability codes F, H, and D) for FMF and appropriate post and stations are as furnished by initial issue actions. Changes to maintenance replacement rates resulting from actual use may require recomputation maintenance float allowances by holding units. Recomputation should be made in accordance with MCO 4442.3

1-29. SECTION IV-REFERENCE DESIGNATION INDEX.

1-30. The Reference Designation Index consists of those electrical and electronic parts to which reference may be made in schematics, with applicable figure and index number for each reference designation.

1-31. REFERENCE DESIGNATION. This column consists of alphabetically and numerically arranged designations which have been assigned to electrical and electronic parts in accordance with USA Standard Reference Designations for Electrical and Electronics Parts and Equipments, Y32.16. Typical class designation letters are explained in table 1-3. Refer to Y32.16 for a complete explanation of reference designations.

1-32. FIGURE AND INDEX NUMBER. This column contains the figure and index number for each reference designated item listed. When a reference designated part has not been assigned an index number, the figure and index number of the preceding part in the Maintenance Parts List is used with the letter "F" before and figure number, i.e., F7-6, to mean "follows." The notation (Same as. . .) refers to a like assembly which has component designations listed.

1-33. ABBREVIATIONS.

1-34. The abbreviations used throughout this publication are in accordance with MIL-STD-12.

1-35. HOW TO USE THE MAINTENANCE PARTS LIST.

1-36. Information on how to use the Maintenance Parts List follows at the end of the introduction.

Table 1-1. Federal Supply Code Symbol to Manufacturer's Name

The manufacturers of vendor parts are identified by code symbols listed numerically below. Parts not followed by a vendor's code symbol are either military standard (AN, MS, JAN, or MIL) or Texas Instruments Incorporated, Equipment Group part numbers.

Code	Mfr. Name and Address	Code	Mfr. Name and Address
00770	Snap Products Corp. 625 W. Jackson Blvd. Chicago, IL 60606	32604	Reed Switch Developments Co., Inc. 902 Tommyhawk Trail P.O. Box 1464 Kerrville, TX 78028
02899	Laconia Malleable Iron Co., Inc. 71 Water St. Laconia, NH 03246	39428	McMaster-Carr Supply Co. P.O. Box 4355 Chicago, IL 60680
03481	B.F. Goodrich Company Engineered Products Group 500 S. Main St. Akron, OH 44318	53800	Sears, Roebuck and Co. 403 S. State St; Chicago, IL 60605
06229	Electrovert, Inc. 86 Hartford Ave. Mount Vernon, NY 10553	57068	Stanley Works Corp. Lake St. New Britain, CT 06050
07707	Emhart Industries, Inc. USM Corp. USM Fastener Div. 510 River Rd. Shelton, CT 06484	72962	Amerace Corp. ESNA Div. 2330 Vauxhall Road Union, NJ 07083
09922	Burndy Corp. Richards Ave. Norwalk, CT 06852	73569	A.B. Chance Co. 210 N. Allen Centralia, MO 65240
14608	Emhart Industries Inc. Corbin Cabinet Lock Hardware Div. 225 Episcopal Rd. Berlin, CT 06037	73957	Groov-Pin Corp. 1125 Hendricks Causeway Ridge field, NJ 07657
15939	Stratotech Co. 232 California St. P.O. Box 125 El Segundo, CA 90245	79136	Waldes Kohinoor, Inc. 47-16 Austel Place Long Island City, NY 11101
19220	Eberhard Mfg. Co. 21944 Drake Rd. Strongsville, OH 44136	79725	The Wiremold Co. Woodland St. West Hartford, CT 06110
29381	Union Corp. Gichner Mobile Systems Locust St. Exit P.O. Box B Dallastown, PA 17313	80063	U.S. Army Communications and Electronics Materiel Readiness Command Logistics Engineering Directorate Fort Monmouth, NJ 07703
		85780	W.A. Moyer and Sons, Inc. Parker's Landing, PA 16049

Table 1-1. Federal Supply Code Symbol to Manufacturer's Name (Continued)

Code	Mfr. Name and Address	Code	Mfr. Name and Address
95272	Sargent Industries, Inc. Stillman Seal Div. 6020 Avenida Encinas P.O. Box 2000 Carlsbad, CA 92008	98003	Nielsen Hardware Corp. 770 Wethersfield Ave. P.O. Box 568 Hartford, CT 06101
96214	Texas Instruments Incorporated Equipment Group 13500 N. Central Expy. P.O. Box 226015 Dallas, TX 75266	98313	Davis Aircraft Products Co., Inc. Scudder and Woodbine Avenues Northport, NY 11768
96906	Military Standards Promulgated by Military Departments Under Authority of Defense Standardization Manual 4120 3-M	99862	Carr Lane Mfg. Co. 4200 Carr Lane Ct. St. Louis, MO 63119

Table 1-2. Manufacturer's Name to Federal Supply Code Symbol

The manufacturers of vendor parts are identified by code symbols listed alphabetically below. Parts not followed by a vendor's code symbol are either military (AN, MS, JAN, or MIL) or Texas Instruments Incorporated, Equipment Group part numbers.

Mfr. Name and Address Code	Mfr. Name and Address	Code
Amerace Corp. ESNA Div. 2330 Vauxhall Road Union, NJ 07083 72962	Groov-Pin Corp. 1125 Hendricks Causeway Ridgefield, NJ 07657	73957
Burndy Corp. Richards Ave. Norwalk, CT 06852 09922	Laconia Malleable Iron Co., Inc. 71 Water St. Laconia, NH 03246	02899
Carr Lane Mfg. Co. 4200 Carr Lane Ct. St. Louis, MO 63119 99862	McMaster-Carr Supply Co. P.O. Box 4355 Chicago, IL 60680	39428
A.B. Chance Co. 210 N. Allen Centralia, MO 65240 73569	Military Standards Promulgated by Military departments under authority of Defense Standardization Manual 4120 3-M	96906
Davis Aircraft Products Co., Inc. Scudder and Woodbine Avenues Northport, NY 11768 98313	W.A. Moyer and Sons, Inc. Parker's Landing, PA 16049	85780
Eberhard Mfg. Co. 21944 Drake Rd. Strongsville, OH 44136 19220	Nielsen Hardware Corp. 770 Wethersfield Ave. P.O. Box 568 Hartford, CT 06101	98003
Electrovert, Inc. 86 Hartford Ave. Mount Vernon, NY 10553 06229	Reed Switch Developments Co., Inc. 902 Tommyhawk Trail P.O. Box 1464 Kerrville, TX 78028	32604
Emhart Industries, Inc. Corbin Cabinet Lock Hardware Div. 225 Episcopal Rd. Berlin, CT 06037 14608	Sargent Industries, Inc. Stillman Seal Div. 6020 Avenida Encinas P.O. Box 2000 Carlsbad, CA 92008	95272
Emhart Industries Inc. USM Corp. USM Fastener Div. 510 River Rd. Shelton, CT 06484 07707	Sears Roebuck and Co. 403 S. State St. Chicago, IL 60605	53800
B.F. Goodrich Company Engineered Products Group 500 S. Main St. Akron, OH 44318 03481	Snap Products Corp. 625 Jackson Blvd. Chicago, IL 60606	00770

Table 1-2. Manufacturer's Name to Federal Supply Code Symbol (Continued)

Mfr. Name and Address	Code	Mfr. Name and Address	Code
Stanley Works Corp. Lake St. New Britain, CT 06050	57068		
Stratotech Co. 232 California St. P.O. Box 125 El Segundo, CA 90245	15939	U.S. Army Communications and Electronics Materiel Readiness Command Logistics Engineering Directorate Fort Monmouth, NJ 07703	80063
Texas Instruments Incorporated Equipment Group 13500 N. Central Expy. Dallas, TX 75266	96214	Waldes Kohinoor, Inc. 47-16 Austel Place Long Island City, NY 11101	79136
Union Corp. Gichner Mobile Systems Locust St. Exit P.O. Box B Dallastown, PA 17313	29381	The Wiremold Co. Woodland St. West Hartford, CT 06110	79725

T.O. 10M1-8-4-4
TM 11-5895-1044-24P
TM SL-4-08419A

AIR FORCE
ARMY
MARINE CORPS

Table 1-3. Usable on Codes

(Not Applicable)

1-10

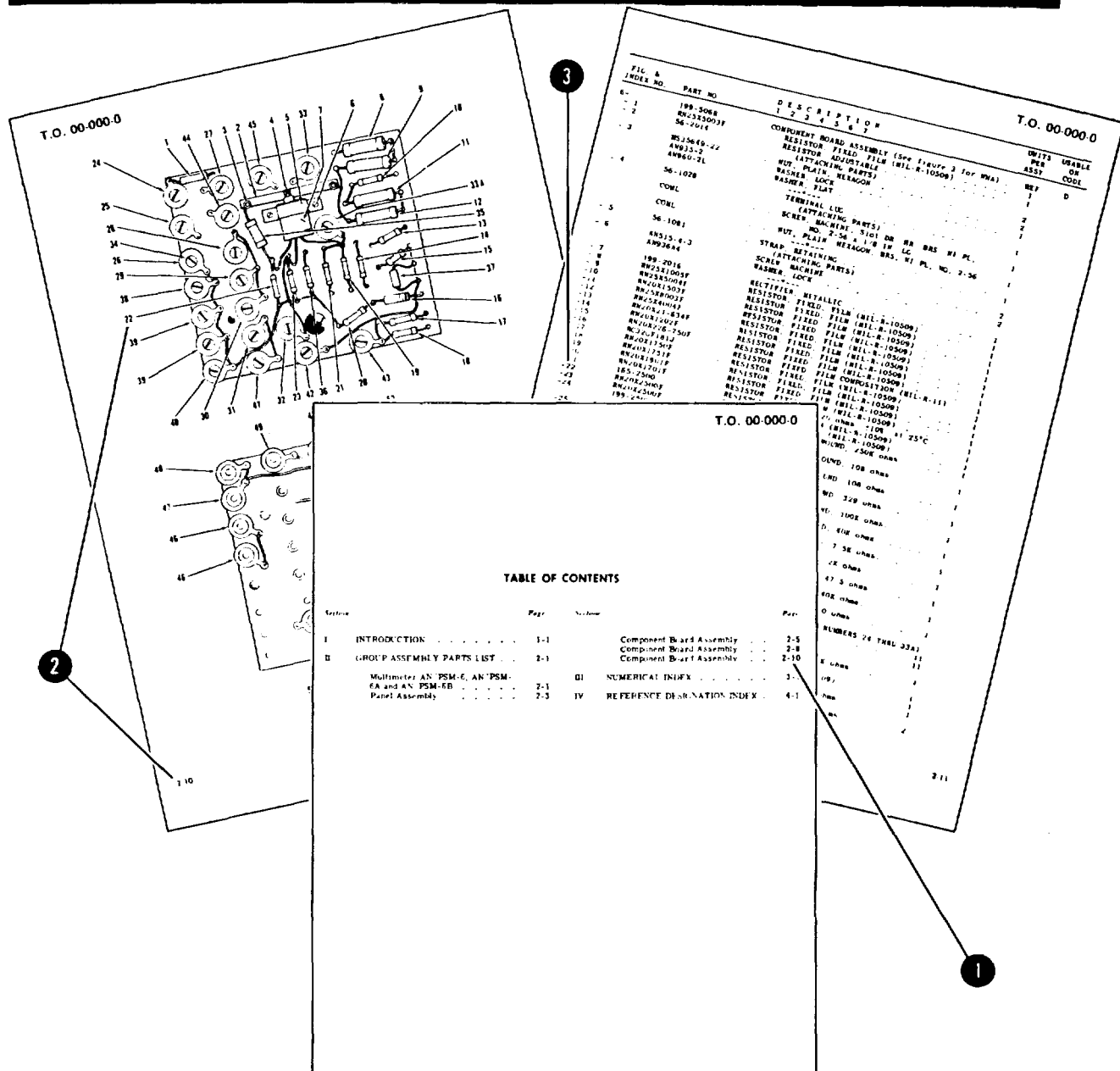
Table 1-4. Class Designation Letters

A	Assembly, separable or repairable Subassembly, separable or repairable	G	Amplifier, rotating Chopper, electronic Exciter (rotating machine) Frequency changer Generator
AR	Amplifier (other than rotating)	H	Hardware
AT	Attenuator Isolator	HP	Hydraulic part
B	Blower Fan Motor Resolver Synchro	HR	Heater Lamp, heating Lamp, infrared
BT	Battery	HS	Handset
C	Capacitance bushing Capacitor	HT	Earphone Headset
CB	Circuit breaker	J	Connector, receptacle, electrical Jack Receptacle (connector, stationary portion) Waveguide flange (choke)
CP	Adapter, connector Junction (coaxial or waveguide)	K	Contractor Relay
CR	Absorber, overvoltage Crystal diode Crystal unit Detector, crystal Rectifier Selenium cell Semiconductor device, diode Switch, semiconductor diode Varistor	L	Coil Inductor Reactor Solenoid, electrical
DC	Coupler, directional	LS	Horn, electrical Speaker
DL	Delay line	M	Clock Counter, electrical Gage Instrument Meter Oscillograph Oscilloscope Recorder, elapsed time Strain gage Thermometer Timer, electric
DS	Audible signaling device Flasher Lamp	MG	Converter Dynamotor Inverter
E	Antenna Brush, electrical contact Contact, electrical Insulator Loop antenna Magnet, permanent Part, Miscellaneous electrical Post, binding Protector gap Rotary joint Shield, electrical Terminal (individual)	MK	Microphone
EQ	Equalizer Network, equalizing	MP	Gyroscope Part, miscellaneous mechanical (bearing, coupling, gear, shaft) Part, structural Reed, vibration Tuning fork
F	Fuse Limiter, current	MT	Transducer
FL	Filter		

Table 1-4. Class Designation Letters (Continued)

P	Connector, plug, electrical Disconnecting device (connector, plug) Plug, electrical (connector, movable portion) Waveguide flange (plain)	TR	Transmitter, radio
		U	Integrated circuit package
		V	Barrier photocell Electron tube Pliototube Photoelectric cell
PS	Inverter, static (dc to ac) Power supply Thermogenerator	VR	Crystal diode, breakdown Regulator, voltage (excluding electron tube)
PU	Eraser, magnetic Recording head	W	Bus bar Cable Waveguide Wire
Q	Transistor Rectifier, semiconductor controlled Switch, semiconductor Triode thyristor	WT	Tiepoint, wiring
		X	Followed by reference designation of mounted part
R	Potentiometer Resistor Rheostat Shunt, instrument	XF	Fuseholder
		XDS	Lampholder
		XV	Electron tube socket
		Y	Crystal unit Oscillator Resonator, tuning fork
RE	Receiver, radio	Z	Cavity, tuned Mode suppressor Network, general (where specific class letters do not fit) Tuned circuit
RT	Ballast lamp Ballast tube Lamp, resistance Thermistor		
RV	Varistor		
S	Key, telegraph Switch Thermostat		
SQ	Squib		
SR	Slip ring		
T	Taper Transformer		
TB	Terminal board		
TC	Thermocouple		
TP	Test point		

HOW TO USE THE ILLUSTRATED PARTS BREAKDOWN



WHEN THE PART NUMBER IS NOT KNOWN

- 1 Determine the function and application of the part required. Turn to the Table of Contents and select the most appropriate title. Note the illustration page number.
- 2 Turn to the page indicated and locate the desired part on the illustration.

- 3 From the illustration, obtain the index number assigned to the part desired. Refer to the accompanying description for specific information regarding the part.

HOW TO USE THE ILLUSTRATED PARTS BREAKDOWN

T.O. 00-000-0

FIG. & INDEX NO. PART NO. DESCRIPTION

FIG. & INDEX NO.	PART NO.	DESCRIPTION	UNITS PER ASST	USABLE OR ASST	CODE
1	199-2008	CONDENSER BOARD ASSEMBLY (See Figure 3 for PWA)			
2	RW254003F	RESISTOR FIRED FILM (MIL-R-10500)			
3	RW254004F	RESISTOR FIRED FILM (MIL-R-10500)			
4	RW254005F	RESISTOR FIRED FILM (MIL-R-10500)			
5	RW254006F	RESISTOR FIRED FILM (MIL-R-10500)			
6	RW254007F	RESISTOR FIRED FILM (MIL-R-10500)			
7	RW254008F	RESISTOR FIRED FILM (MIL-R-10500)			
8	RW254009F	RESISTOR FIRED FILM (MIL-R-10500)			
9	RW254010F	RESISTOR FIRED FILM (MIL-R-10500)			
10	RW254011F	RESISTOR FIRED FILM (MIL-R-10500)			
11	RW254012F	RESISTOR FIRED FILM (MIL-R-10500)			
12	RW254013F	RESISTOR FIRED FILM (MIL-R-10500)			
13	RW254014F	RESISTOR FIRED FILM (MIL-R-10500)			
14	RW254015F	RESISTOR FIRED FILM (MIL-R-10500)			
15	RW254016F	RESISTOR FIRED FILM (MIL-R-10500)			
16	RW254017F	RESISTOR FIRED FILM (MIL-R-10500)			
17	RW254018F	RESISTOR FIRED FILM (MIL-R-10500)			
18	RW254019F	RESISTOR FIRED FILM (MIL-R-10500)			
19	RW254020F	RESISTOR FIRED FILM (MIL-R-10500)			
20	RW254021F	RESISTOR FIRED FILM (MIL-R-10500)			
21	RW254022F	RESISTOR FIRED FILM (MIL-R-10500)			
22	RW254023F	RESISTOR FIRED FILM (MIL-R-10500)			
23	RW254024F	RESISTOR FIRED FILM (MIL-R-10500)			
24	RW254025F	RESISTOR FIRED FILM (MIL-R-10500)			
25	RW254026F	RESISTOR FIRED FILM (MIL-R-10500)			
26	RW254027F	RESISTOR FIRED FILM (MIL-R-10500)			
27	RW254028F	RESISTOR FIRED FILM (MIL-R-10500)			
28	RW254029F	RESISTOR FIRED FILM (MIL-R-10500)			
29	RW254030F	RESISTOR FIRED FILM (MIL-R-10500)			
30	RW254031F	RESISTOR FIRED FILM (MIL-R-10500)			
31	RW254032F	RESISTOR FIRED FILM (MIL-R-10500)			

SECTION III NUMERICAL INDEX

PART NO.	FIG. AND INDEX NO.	QTY PER ASST	UNIT	REMARKS
RW201701F	4-1	1	PI	
RW201702F	4-2	1	PI	
RW201703F	4-3	1	PI	
RW201704F	4-4	1	PI	
RW201705F	4-5	1	PI	
RW201706F	4-6	1	PI	
RW201707F	4-7	1	PI	
RW201708F	4-8	1	PI	
RW201709F	4-9	1	PI	
RW201710F	4-10	1	PI	
RW201711F	4-11	1	PI	
RW201712F	4-12	1	PI	
RW201713F	4-13	1	PI	
RW201714F	4-14	1	PI	
RW201715F	4-15	1	PI	
RW201716F	4-16	1	PI	
RW201717F	4-17	1	PI	
RW201718F	4-18	1	PI	
RW201719F	4-19	1	PI	
RW201720F	4-20	1	PI	
RW201721F	4-21	1	PI	
RW201722F	4-22	1	PI	
RW201723F	4-23	1	PI	
RW201724F	4-24	1	PI	
RW201725F	4-25	1	PI	
RW201726F	4-26	1	PI	
RW201727F	4-27	1	PI	
RW201728F	4-28	1	PI	
RW201729F	4-29	1	PI	
RW201730F	4-30	1	PI	
RW201731F	4-31	1	PI	
RW201732F	4-32	1	PI	
RW201733F	4-33	1	PI	
RW201734F	4-34	1	PI	
RW201735F	4-35	1	PI	
RW201736F	4-36	1	PI	
RW201737F	4-37	1	PI	
RW201738F	4-38	1	PI	
RW201739F	4-39	1	PI	
RW201740F	4-40	1	PI	
RW201741F	4-41	1	PI	
RW201742F	4-42	1	PI	
RW201743F	4-43	1	PI	
RW201744F	4-44	1	PI	
RW201745F	4-45	1	PI	
RW201746F	4-46	1	PI	
RW201747F	4-47	1	PI	
RW201748F	4-48	1	PI	
RW201749F	4-49	1	PI	
RW201750F	4-50	1	PI	
RW201751F	4-51	1	PI	
RW201752F	4-52	1	PI	
RW201753F	4-53	1	PI	
RW201754F	4-54	1	PI	
RW201755F	4-55	1	PI	
RW201756F	4-56	1	PI	
RW201757F	4-57	1	PI	
RW201758F	4-58	1	PI	
RW201759F	4-59	1	PI	
RW201760F	4-60	1	PI	
RW201761F	4-61	1	PI	
RW201762F	4-62	1	PI	
RW201763F	4-63	1	PI	
RW201764F	4-64	1	PI	
RW201765F	4-65	1	PI	
RW201766F	4-66	1	PI	
RW201767F	4-67	1	PI	
RW201768F	4-68	1	PI	
RW201769F	4-69	1	PI	
RW201770F	4-70	1	PI	
RW201771F	4-71	1	PI	
RW201772F	4-72	1	PI	
RW201773F	4-73	1	PI	
RW201774F	4-74	1	PI	
RW201775F	4-75	1	PI	
RW201776F	4-76	1	PI	
RW201777F	4-77	1	PI	
RW201778F	4-78	1	PI	
RW201779F	4-79	1	PI	
RW201780F	4-80	1	PI	
RW201781F	4-81	1	PI	
RW201782F	4-82	1	PI	
RW201783F	4-83	1	PI	
RW201784F	4-84	1	PI	
RW201785F	4-85	1	PI	
RW201786F	4-86	1	PI	
RW201787F	4-87	1	PI	
RW201788F	4-88	1	PI	
RW201789F	4-89	1	PI	
RW201790F	4-90	1	PI	
RW201791F	4-91	1	PI	
RW201792F	4-92	1	PI	
RW201793F	4-93	1	PI	
RW201794F	4-94	1	PI	
RW201795F	4-95	1	PI	
RW201796F	4-96	1	PI	
RW201797F	4-97	1	PI	
RW201798F	4-98	1	PI	
RW201799F	4-99	1	PI	
RW201800F	4-100	1	PI	

SECTION IV REFERENCE DESIGNATION INDEX

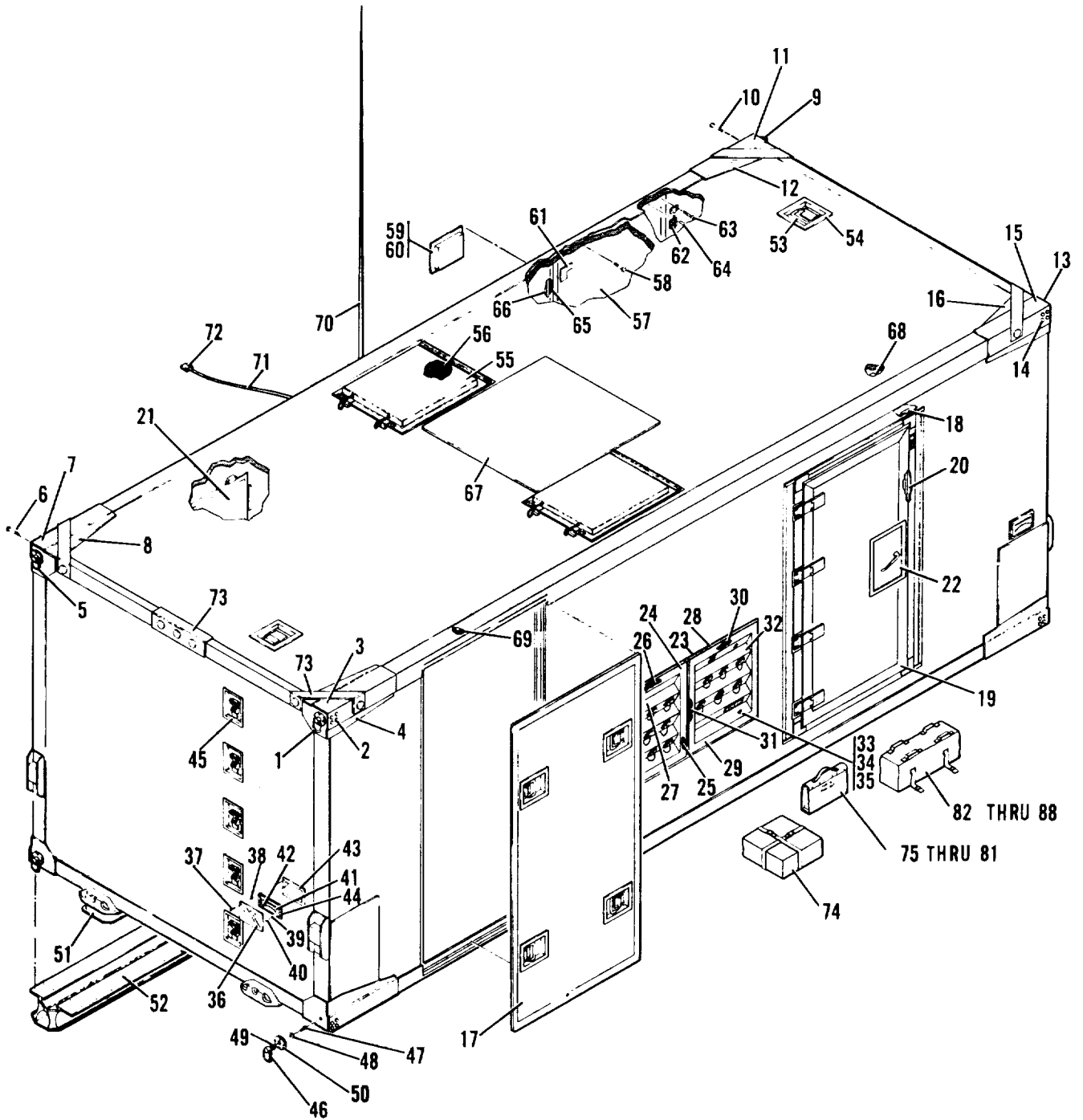
REFERENCE DESIGNATION	FIGURE & INDEX NO.	PART NUMBER
A101	3-26	165-2806
A102	4-37	47204
A103	6-33	165-2800
A104	6-37	165-2800
A105	6-37	199-2018
A106	6-37	36-5063
A107	3-22	36-5068
A108	3-22	165-3048
A109	3-22	199-2048
A110	3-22	36-5043B
A111	3-22	165-3042
BT101	3-17	165-3042
BT102	3-19	165-3042
BT103	3-21	165-3042
BT104	3-22	165-3042
BT105	3-22	165-3042
BT106	3-22	165-3042
BT107	3-22	165-3042
BT108	3-22	165-3042
BT109	3-22	165-3042
BT110	3-22	165-3042
BT111	3-22	165-3042
BT112	3-22	165-3042
BT113	3-22	165-3042
BT114	3-22	165-3042
BT115	3-22	165-3042
BT116	3-22	165-3042
BT117	3-22	165-3042
BT118	3-22	165-3042
BT119	3-22	165-3042
BT120	3-22	165-3042
BT121	3-22	165-3042
BT122	3-22	165-3042
BT123	3-22	165-3042
BT124	3-22	165-3042
BT125	3-22	165-3042

WHEN THE PART NUMBER OR REFERENCE DESIGNATION IS KNOWN

1. WHEN THE PART IS KNOWN, refer to Section 111 Numerical Index Locate the part number and note the figure and index number assigned to the part number
2. Turn to the figure indicated and locate the index number referenced in the Numerical Index
3. If a pictorial representation of the part. or its location is desired, refer to the same index number on the accompanying Illustration
4. WHEN THE REFERENCE DESIGNATION IS KNOWN. refer to Section IV, Reference Designation Index Locate the reference designation and note the figure and index number and the part number assigned
5. Turn to the figure indicated and locate the index number referenced in the Reference Designation Index
6. If a pictorial representation of the part, or its location is desired. refer to the same index number on the accompanying illustration.

SECTION II
 MAINTENANCE PARTS LIST

FIGURE & INDEX NUMBER	PART NUMBER	FSCM	DESCRIPTION	UNITS PER ASSY	USABLE ON CODE	SMR CODE
1-	7001027-504	29381	SHELTER, RIGID(TI SPEC 902781-4).....	1		PEFDDS
1-	7001067-501	29381	RING INSTALLATION, LIFTING AND	1		XBFZZN
			TIE-DOWN			
1-1	4001102-501	29381	..RING, LIFT AND TIE-DOWN.....	1		XBFZZN
1-2	4000316-4	29381	..SCREW(AP)	4		XBFZZN
1-3	MS24628-66	96906	..SCREW(AP)	4		XBFZZN
1-4	7001108-1	29381	..ANGLE.....	1		XBFZZN
1-	MS20601AD6W8	96214	..RIVET, STRUCTURAL(AP)	21		XBFZZN
1-	AD68H	07707	..RIVET(GMS SPEC. 7000721-9)(AP).....	31		XBFZZN
1-	7001067-502	29381	RING INSTALLATION, LIFTING AND	1		XBFZZN
			TIE-DOWN			
1-5	4001102-501	29381	..RING, LIFT AND TIE-DOWN.....	1		XBFZZN
1-6	4000316-4	29381	..SCREW(AP)	4		XBFZZN
1-7	MS24628-66	96906	..SCREW(AP)	4		XBFZZN
1-8	7001108-2	29381	..ANGLE.....	1		XBFZZN
1-	MS20601AD6W8	96214	..RIVET, STRUCTURAL(AP)	21		XBFZZN
1-	AD68H	07707	..RIVET(GMS SPEC. 7000721-9)(AP).....	31		XBFZZN
1-	7001067-503	29381	RING INSTALLATION, LIFTING AND	1		XBFZZN
			TIE-DOWN			
1-9	4001102-501	29381	..RING, LIFT AND TIE-DOWN.....	1		XBFZZN
1-10	4000316-4	29381	..SCREW(AP)	4		XBFZZN
1-11	MS24628-66	96906	..SCREW(AP)	4		XBFZZN
1-12	7001109-1	29381	..ANGLE.....	1		XBFZZN
1-	MS20601AD6W8	96214	..RIVET, STRUCTURAL(AP)	21		XBFZZN
1-	AD68H	07707	..RIVET(GMS SPEC. 7000721-9)(AP).....	31		XBFZZN
1-	7001067-504	29381	RING INSTALLATION, LIFTING AND	1		XBFZZN
			TIE-DOWN			
1-13	4001102-501	29381	..RING, LIFT AND TIE-DOWN.....	1		XBFZZN
1-14	4000316-4	29381	..SCREW(AP)	4		XBFZZN
1-15	MS24628-66	96906	..SCREW(AP)	4		XBFZZN
1-16	7001109-2	29381	..ANGLE.....	1		XBFZZN
1-	MS20601AD6W8	96214	..RIVET, STRUCTURAL(AP)	21		XBFZZN
1-	AD68H	07707	..RIVET(GMS SPEC. 7000721-9)(AP).....	31		XBFZZN
1-17	7001199-501	29381	..COVER INSTALLATION, ACCESS.....	1		XBFZZN
			OPENING			
1-18	7001261-501	29381	ELECTRICAL INSTALLATION(SEE FIG. 2 FOR.....	1		XC----
			BREAKDOWN)			
1-19	7001081-501	29381	DOOR INSTALLATION, PERSONNEL AND DOOR	1		XC----
			STOP(SEE FIG. 3 FOR BREAKDOWN)			
1-20	4001035-5	29381	GASKET	1		PAFZZN
1-21	7001196-501	29381	DOOR INSTALLATION, EMERGENCY(SEE FIG. 4	1		XC----
			FOR BREAKDOWN)			
1-22	A192C	14608	PADLOCK(GMS SPEC. 3600008-1)	1		XBFZZN
1-	7001102-501	29381	PANEL, POWER ENTRY INSTALLATION	1		XBFZZN
1-23	6001259-501	29381	GASKET INSTALLATION, PANEL	1		XBFZZN
			CONNECTOR			
1-24	MS35206-282	96906	.. SCREW (AP)	14		PAFZZN
1-	MS35338-44	96906	..WASHER(AP).....	14		PAFZZN
1-	MS27183-10	96906	..WASHER(AP).....	14		XBFZZN
1-25	6001259-1	29381	...GASKET	2		PAFZZN
1-26	6001259-2	29381	...GASKET	2		PAFZZN
1-27	7001103-501	29381	...PANEL, CONNECTOR	1		XBFZZN

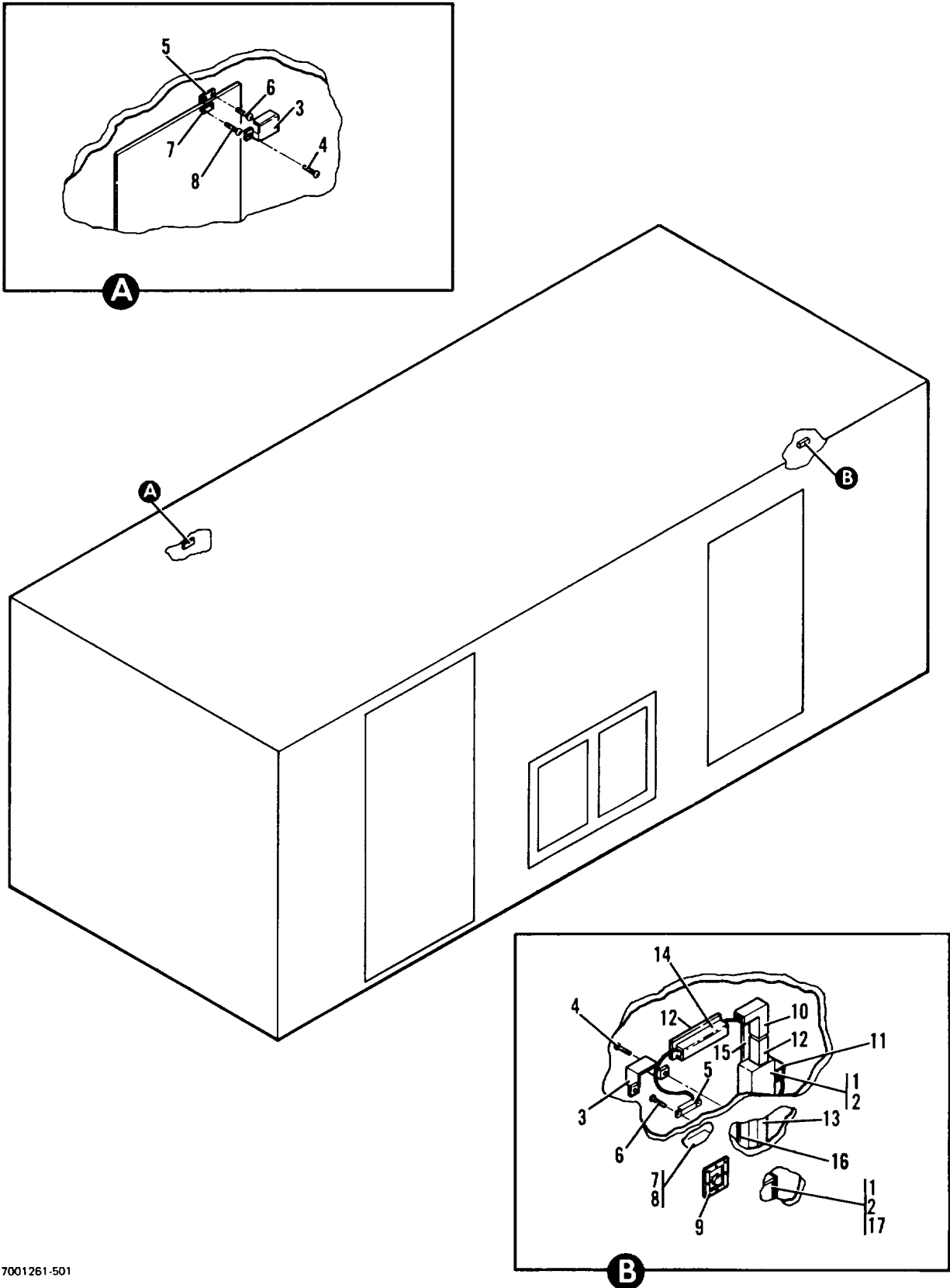


7001027-502

Figure 1 . Rigid Shelter

& INDEX NUMBER	NUMBER	FSCM	DESCRIPTION	FIGURE	PART UNITS USABLE		
				PER ASSY	ON CODE	SMR CODE	
			1 2 3 4 5 6 7				
1-	7001102-503	29381	.PANEL, POWER ENTRY INSTALLATION.....		1		XBFZZN
1-28	6001259-503	29381	..GASKET INSTALLATION, PANEL.....		1		XBFZZN
			CONNECTOR				
1-29	MS35206-282	96906	..SCREW(AP)		14		PAFZZN
1-	MS35338-44	96906	..WASHER(AP)		14		PAFZZN
1-	MS27183-10	96906	..WASHER(AP)		14		XBFZZN
1-30	6001259-1	29381	...GASKET		2		PAFZZN
1-31	6001259-2	29381	...GASKET		2		PAFZZN
1-32	7001142-501	29381PANEL, CONNECTOR		1		XBFZZN
1-33	4001127-1	29381GROUND STUD, 1/4-20		1		PAFZZN
1-34	MS51967-2	96906NUT(AP)		4		PAFZZN
1-	MS35338-44	96906WASHER(AP)		4		PAFZZN
1-35	MS35425-40	96906NUT(AP)		1		PAFZZN
1-	MS27183-10	96906WASHER(AP)		4		XBFZZN
1-	6001661-501	29381	.INCLINOMETER ASSEMBLY.....		4		XBFZZN
1-36	4001380-i	29381	..COVER, INCLINOMETER		1		XBFZZN
1-37	6006107-40	29381	..SCREW, SELF-LOCKING(AP)		4		XBFZZN
1-	MS15795-805	96906	..WASHER(AP)		4		XBFZZN
1-	568106	03481	NUT, BLIND RIVET(GMS SPEC		4		XBFZZN
			7000729-37)(AP)				
1-38	3000703-1	29381	RETAINER.....		4		XBFZZN
1-39	4000234-1	06229	P-CLIP, ADJUSTABLE		2		XBFZZN
1-40	MS51957-13	96906	SCREW(AP)		2		XBFZZN
1-	MS35338-135	96906	WASHER(AP)		2		XBFZZN
1-	MS15795-804	96906	WASHER(AP)		2		XBFZZN
1-41	MB1740	85780	.INCLINOMETER, VIAL(GMS SPEC		1		XBFZZN
			3000058-1)				
1-42	MS51957-45	96906	SCREW(AP)		2		XBFZZN
1-	MS35338-137	96906	WASHER(AP)		2		XBFZZN
1-	MS15795-841	96906	WASHER(AP)		2		XBFZZN
1-	S8B8120	03481	NUT, BLIND RIVET(GMS SPEC		2		XBFZZN
			7000729-7)(AP)				
1-43	4001400-1	29381	PAN, RECESSED.....		1		XBFZZN
1-	AD43H	07707	RIVET(GMS SPEC. 7000721-3)(AP)		6		XBFZZN
1-	AK43H	07707	RIVET(GMS SPEC. 7000721-18)(AP).....		2		XBFZZN
1-44	4000918-501	29381	PLATE, ASSEMBLY		1		XBFZZN
1-	6001258-501	29381	STEP INSTALLATION.....		10		XBFZZN
1-45	AL3-575709	19220	STEP ASSEMBLY, RECESSED.....		1		XBFZZN
			FOLDING(GMS SPEC. 6000176-1)				
1-	AD64H	07707	RIVET(AP)		10		XBFZZN
1-	4600123-501	29381	EYE ASSEMBLY, LIFTING AND		4		XBFZZN
			TIE-DOWN				
1-46	4600122-1	29381	RING AND STUD.....		1		XBFZZN
1-47	4600118-1	29381	SCREW(AP)		1		XBFZZN
1-	3600002-1	29381	WASHER, FLAT(AP)		1		XBFZZN
1-48	4600119-1	29381	SPACER, RING		1		XBFZZN
1-49	5160-98	79136	RING, RETAINING(GMS SPEC. 3600001-1)		1		XBFZZN
1-50	4600120-1	29381	RING.....		1		XBFZZN
1-51	7001060-501	29381	MOUNTING PLATE, MOBILIZER AND		1		XC----
			JACK				
1-52	7001271-501	29381	SKID INSTALLATION.....		1		XC----
1-	6001415-501	29381	ROOF HANDHOLD INSTALLATION		2		XBFZZN
1-53	H4734-SSW-2-G	98003	HANDLE(GMS SPEC. 6001351-1)).....		1		XBFZZN
1-	AD645	07707	RIVET(GMS SPEC. 7000721-14)(AP)		5		XBFZZN
1-54	6001294-1	29381	PAN, RECESSED.....		1		XBFZZN
1-	AD645	07707	RIVET(GMS SPEC. 7000721-14)(AP).....		8		XBFZZN

FIGURE & INDEX NUMBER	PART NUMBER	FSCM	DESCRIPTION	UNITS PER ASSY	USABLE ON CODE	SMR CODE
1-55	7001147-501	29381	.COVER ASSEMBLY.....	2		XBFZZN
1-	S25B80CS1	03481	.NUT, BLIND RIVET(GMS SPEC 7000729-19)(AP)	4		XBFZZN
1-	S25B200C51	03481.	.NUT, BLIND RIVET(GMS SPEC 7000729-21)(AP)	2		XBFZZN
1-56	70011i69-502	29381	.COVER.....	2		XBFZZN
1-	7001199-502	29381	.INSTALLATION, ACCESS OPENING .COVER	1		XBFZZN
1-57	6001296-501	29381	.PANEL, ACCESS ASSEMBLY.....	1		XBFZZN
1-58	MS51959-98	96906	.SCREW(AP).....	24		PAOZZN
1-	S31B275C51	03481	.NUT, BLIND RIVET(GMS SPEC 7000729-27)(AP)	24		XBFZZN
1-59	H4734-SSW-2-G	98003	...HANDLE(GMS SPEC. 6001351-1).....	4		XBFZZN
1-	AD64H	07707	...RIVET(GMS SPEC. 700072i-7)(AP).....	5		XBFZZN
1-60	6001294-1	29381	...PAN, RECESSED.....	4		XBFZZN
1-	AD62H	07707	...RIVET(GMS SPEC. 7000721-6)(AP).....	5		XBFZZN
1-	AD64H	07707	...RIVET(GMS SPEC. 7000721-7)(AP).....	3		XBFZZN
1-61	4001203-1	29381	..BRACE, ANGLE.....	2		XBFZZN
1-	AD64H	07707	..RIVET(GMS SPEC. 7000721-77)(AP).....	7		XBFZZN
1-	AD68H	07707	..RIVET(GMS SPEC. 7000721-9)(AP).....	6		XBFZZN
1-62	1078	57068	..BOLT, BARREL.....	2		PAFZZN
1-63	MS51861-45C	96906	..SCREW(AP).....	2		PAFZZN
1-64	MS51861-49C	96906	..SCREW(AP).....	4		PAFZZN
1-65	4600293-15	29381	..GASKET, RADIO FREQUENCY SHIELD.....	1		PAFZZN
1-66	4600293-16	96214	..GASKET, SILICONE.....	1		PAFZZN
1-67	4001274-1	29381	..PLATE, DOUBLER.....	1		XBFZZN
1-	AD645	07707	..RIVET(GMS SPEC. 7000721-14)(AP).....	28		XBFZZN
1-68	4000203-1	29381	..DRAIN, PLUG.....	1		XBFZZN
1-	AD43H	07707	..RIVET(AP).....	1		XBFZZN
1-69	FDK-3171	98313	..RING AND CLIP.....	32		XBFZZN
1-	AD435	07707	..RIVET(GMS SPEC. 7000721-12)(AP).....	8		XBFZZN
1-	6001606-501	29381	..GROUND STAKE ASSEMBLY.....	1		XBFZZN
1-70	G3370	73569	..ROD, GROUND.....	1		XBFZZN
1-71	6001606-1	29381	..WIRE.....	1		XBFZZN
1-72	OA26-B	09922	..TERMINAL, OIKLUG.....	2		XBFZZN
1-73	7001291-501	29381	..CLEARANCE LIGHT INSTALLATION(SEE FIG. 5. FOR BREAKDOWN)	1		XC----
1-74	7001190-501	29381	..KIT, REPAIR, SHELTER.....	1		PAFZZN
1-	4001406-502	29381	..KIT, TOOL.....	1		XBFZZN
1-75	6001469-1	29381	..CONTAINER, TOOL KIT.....	1		XBFZZN
1-76	5522B23	39428	..EXTENSION, 5-1/2.....	2		XBFZZN
1-77	9B43785	53800	..WRENCH, RACHET, 3/8 DRIVE.....	2		XBFZZN
1-78	3416A18	39428	..PUNCH, PIN.....	1		XBFZZN
1-79	9844332	53800	..WRENCH, SOCKET 7/16, 3/8 DRIVE.....	2		XBFZZN
1-80	9B44696	53800	..WRENCH, COMBINATION, 9/16.....	2		XBFZZN
1-81	9641298	53800	..SCREWDRIVER, PHILLIPS HEAD, #4 POINT.....	2		XBFZZN
1-	4001405-502	29381	..KIT, ANCILLARY EQUIPMENT.....	1		AFFFF
1-82	4000993-501	29381	..ANCHOR, TIE-DOWN.....	2		PAOZZN
1-83	4001268-1	96214	..ROD, DRIVE.....	1		PAOZZN
1-84	4001269-1	96214	..HEAD, DRIVE.....	1		PAOZZN
1-85	6001463-501	29381	..CABLE ASSEMBLY.....	2		PAOZZN
1-86	7001258-1	29381	..STRAP ASSEMBLY.....	4		PAOZZN
1-87	LA-HH-S	02899	..HANDLE, HOLDING.....	1		XBFZZN
1-88	4600320-1	29381	..EYEBOLT, MODIFIED(AP).....	1		PAOZZN
1-	MS51967-14	96906	..NUT(AP).....	1		PAOZZN
1-	MS51967-14	96906	..NUT(AP).....	1		PAOZZN



7001261-501

Figure 2. Electrical Installation

FIGURE & INDEX NUMBER	PART NUMBER	FSCM	DESCRIPTION 1 2 3 4 5 6 7	UNITS PER ASSY	USABLE ON CODE	SMR CODE
2-	7001261-501	29381	ELECTRICAL INSTALLATION(SEE FIG. 1 FOR NHA)			REF XC----
2-1	1201-GRY	79725	SWITCH	2		PAFZZN
2-2	2i41	79725	BOX, SWITCH	2		XBFZZN
2-3	4001299-1	29381	COVER	2		XBFZZN
2-4	MS51957-44	96906	SCREW(AP)	2		PAFZZN
2-	MS15795-841	96906	WASHER(AP).....	2		XBFZZN
2-	S8B120	03481	NUT, BLIND RIVET(GMS SPEC 7000729-7)(AP)	2		XBFZZN
2-5	V-90	32604	PROXIMITY SW	2		XBFZZN
2-6	MS51861-26C	96906	SCREW(AP)	2		PAFZZN
2-7	9A	32604	MAGNET.....	2		PAFZZN
2-8	MS51861-26C	96906	SCREW(AP)	2		PAFZZN
2-9	6001500-501	29381	CONNECTOR INSTALLATION	1		XC----
2-10	2111	79725	ELBOW, 90 DEGREE FLAT	1		XBFZZN
2-11	2101	79725	COUPLING	2		XBFZZN
2-12	6001457-12	29381	WIRING RACEWAY	2		XBFZZN
2-13	6001457-11	29381	WIRING RACEWAY	1		XBFZZN
2-14	6001602-2	29381	COVER, WIREMOLD	1		XBFZZN
2-15	6001602-1	29381	COVER, WIREMOLD	1		XBFZZN
2-16	4001309-1	29381	CHANNEL, WIREMOLD	1		XBFZZN
2-	AD62H	07707	RIVET(GMS SPEC. 7000721-6)(AP).....	1		XBFZZN
2-17	2110B	79725	BLANK END FITTING.....	1		XBFZZN

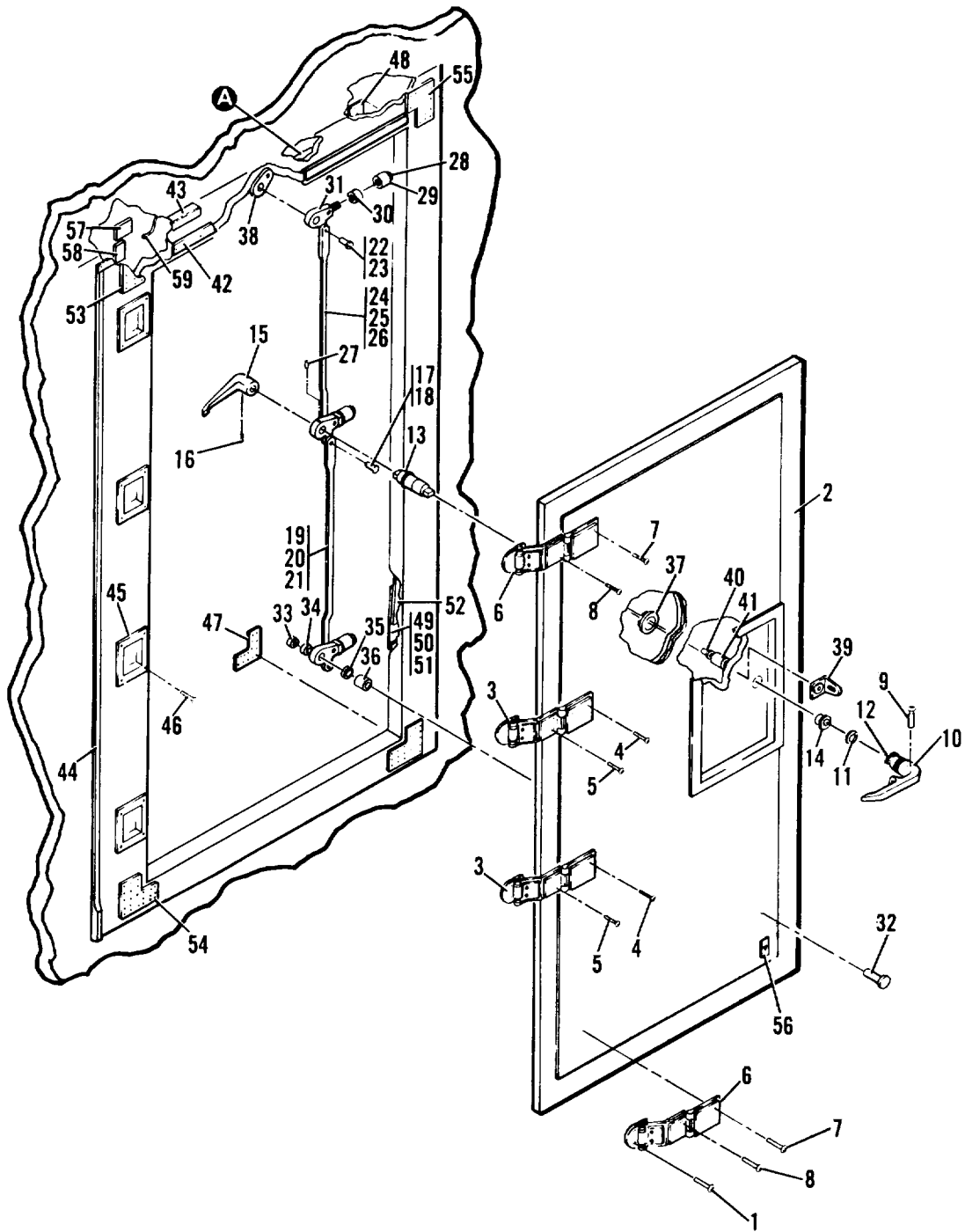
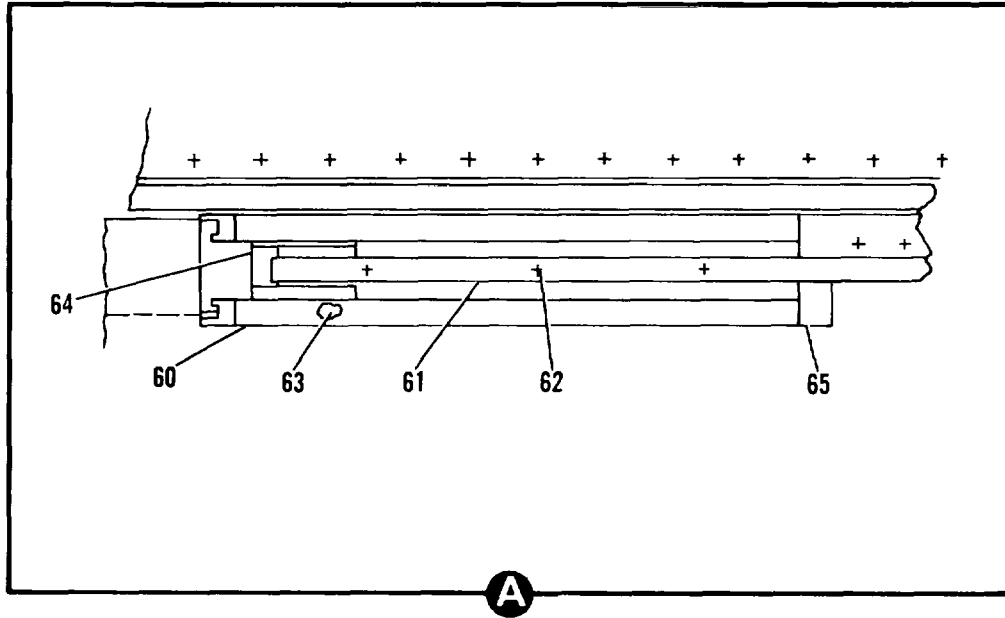


Figure 3. Personnel and Door Stop Door Installation (Sheet 1 of 2)

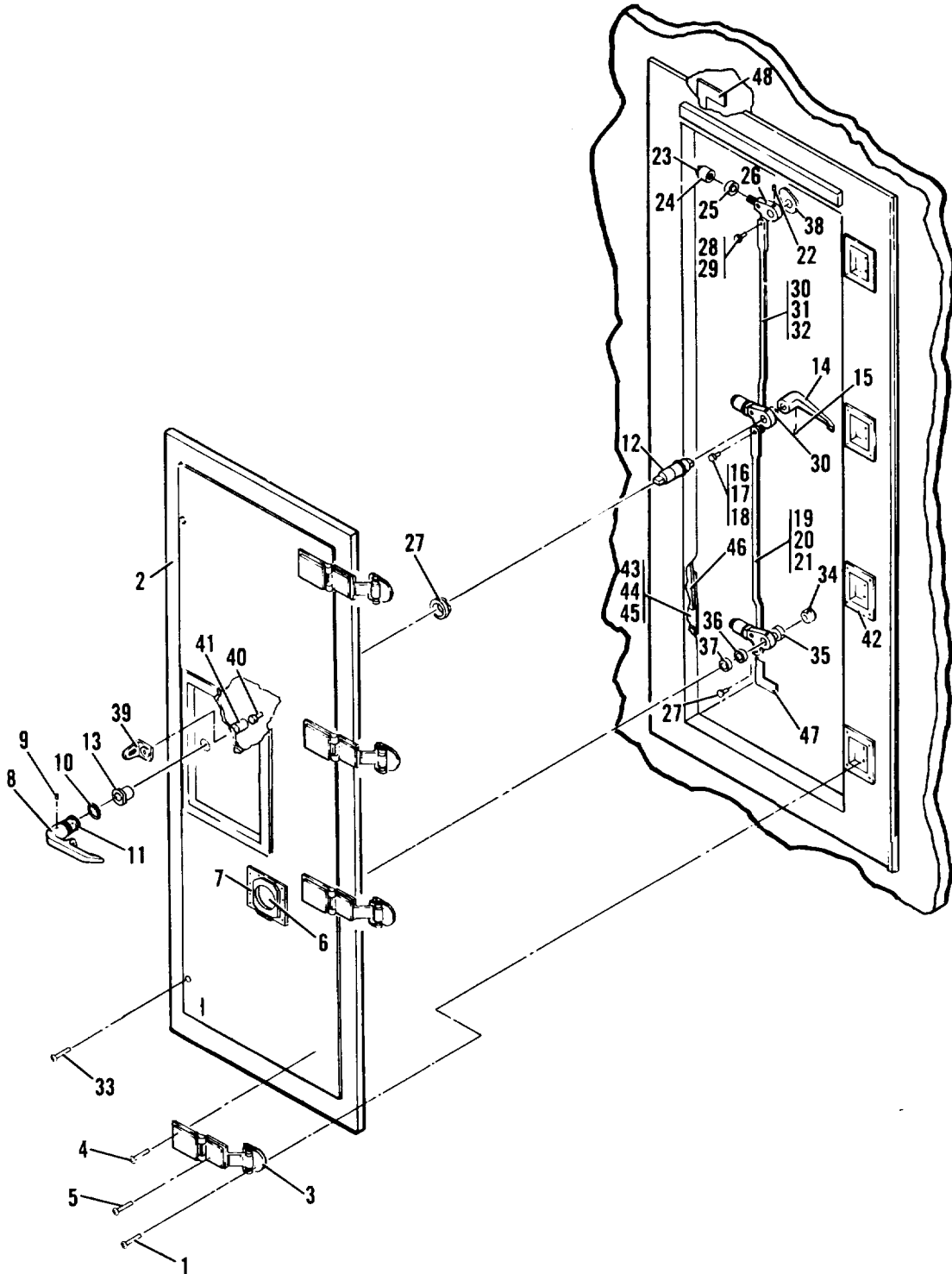


7001081-501

Figure 3. Personnel and Door Stop Door Installation (Sheet 2 of 2)

FIGURE & INDEX NUMBER	PART NUMBER	FSCM	DESCRIPTION 1 2 3 4 5 6 7	UNITS PER ASSY	USABLE ON CODE	SMR CODE
3-	7001081-501	29381	DOOR INSTALLATION, PERSONNEL AND DOOR	REF		XC----
			STOP(SEE FIG. 1 FOR NHA)			
3/1-	7001035-501	29381	..DOOR ASSEMBLY, PERSONNEL	1		XBFZZN
3/1-1	MS35191-278	96906	..SCREW(AP)	16		PAFZZN
3/1-	MS27183-41	96906	..WASHER(AP)	16		XBFZZN
3/1-	MS21044-N3	96906	..NUT(AP).....	16		XBFZZN
3/1-2	7001177-501	96214	..PANEL ASSEMBLY, PERSONNEL DOOR	1		XA----
3/1-3	6001421-501	29381	..HINGE ASSEMBLY.....	2		XBFZZN
3/1-4	4000414-1	29381	..BOLT(AP).....	8		XBFZZN
3/1-	MS27183-10	96906	..WASHER(AP)	8		XBFZZN
3/1-	79NTE-040	72962	..NUT(GMS SPEC. 3000061-1)(AP).....	8		XBFZZN
3/1-5	3000182-1	29381	..SCREW(AP)	2		XBFZZN
3/1-6	6001926-501	29381	..HINGE ASSEMBLY. MODIFIED	2		XBFZZN
3/1-7	4000414-1	29381	..BOLT(AP).....	8		XBFZZN
3/1-	MS27183-10	96906	..WASHER(AP)	8		XBFZZN
3/1-	79NTE-040	72962	..NUT(GMS SPEC. 3000061-1)(AP).....	8		XBFZZN
3/1-8	3000182-2	29381	..SCREW(AP)	2		XBFZZN
3/1-	6001191-501	29381	..HANDLE ASSEMBLY	1		XBFZZN
3/1-9	6001188-1	29381	..HANDLE, MODIFIED	1		XBFZZN
3/1-10	MS171657	96906	..PIN(AP).....	1		XBFZZN
3/1-11	A-216SR310-70	95272	..O-RING	1		XBFZZN
3/1-12	6001191-1	29381	..RING, CONTACT	1		XBFZZN
3/1-13	6001187-1	29381	..SHAFT, LATCH HANDLE			XBFZZN
3/1-14	6001186-1	29381	..SLEEVE, HANDLE SHAFT BEARING	1		XBFZZN
3/1-15	6000982-i	29381	..HANDLE	1		XBFZZN
3/1-16	MS171659	96906	..PIN(AP).....	1		XBFZZN
3/1-	7000873-501	29381	..ROD, LATCH ASSEMBLY	1		XBFZZN
3/1-17	6000979-2	29381	..PIN(AP).....	1		XBFZZN
3/1-	4000888-1	29381	..WASHER(AP)	1		XBFZZN
3/1-18	MS171530	96906	..PIN(AP).....	1		XBFZZN
3/1-19	6000985-1	29381	..ROD, LATCH	2		XBFZZN
3/1-20	4000892-1	29381	..SPACER	1		XBFZZN
3/1-21	4000892-2	29381	..SPACER	1		XBFZZN
3/1-	MS20426AD6-7	96906	..RIVET(AP)	4		XBFZZN
3/1-	7000873-502	29381	..ROD, LATCH ASSEMBLY	1		XBFZZN
3/1-22	6000979-1	29381	..PIN(AP).....	2		XBFZZN
3/1-	4000888-1	29381	..WASHER(AP)	4		XBFZZN
3/1-23	MS171530	96906	..PIN(AP).....	2		XBFZZN
3/1-24	6000984-1	29381	..ROD, LATCH	2		XBFZZN
3/1-25	4000892-1	29381	..SPACER	1		XBFZZN
3/1-26	4000892-2	29381	..SPACER	1		XBFZZN
3/1-	MS20426AD6-7	96906	..RIVET(AP)	4		XBFZZN
3/1-	6000970-502	29381	..LATCH ARM ASSEMBLY	3		XBFZZN
3/1-27	MS35674-41	96906	..PIN(AP).....	1		XBFZZN
3/1-28	GP5-125X625-50	73957	..PIN, GROOVE(GMS SPEC.....	1		XBFZZN
			3000103-1)(AP)			
3/1-29	6000962-1	29381	..ROLLER-LATCH	1		XBFZZN
3/1-30	6000968-1	29381	..ROLLER-EXTENSION	1		XBFZZN
3/1-31	6000956-2	29381	..ARM LATCH	1		XBFZZN
3/1-32	MS35751-163	96906	..BOLT.....	2		XBFZZN
3/1-33	MS16228-6	96906	..NUT. (AP).....	2		XBFZZN
3/1-	4000877-1	29381	..WASHER(AP)	2		XBFZZN
3/1-34	6000969-1	29381	..SPACER	2		XBFZZN
3/1-35	4000879-1	29381	..SPACER	2		XBFZZN
3/1-36	4000880-1	29381	..SHIM, LAMINATED	2		XBFZZN
3/1-37	6000973-1	29381	..NUT-BEARING SLEEVE	1		XBFZZN
3/1-38	SC-B-595073	80063	..DETENT.....	1		PAFZZN
3/1-39	6000977-1	29381	..HASP	1		XBFZZN
3/1-40	MS21316-34	96906	..THUMBSCREW(AP)	1		XBFZZN
3/1-	30-00955	00770	..WASHER(GMS SPEC. 4000890-1)(AP)	1		XBFZZN
3/1-41	4001035-1	29381	..GASKET	1		PAFZZN

FIGURE & INDEX NUMBER	PART NUMBER	FSCM	DESCRIPTION 1 2 3 4 5 6 7	UNITS PER ASSY	USABLE ON CODE	SMR CODE
3/1-42	6001384-1	29381	. MOULDING, DRIP	1		XBFZZN
3/1-	AD44H	07707	. RIVET(GMS SPEC. 7000721-4)(AP)	9		XBFZZN
3/1-43	4001499-1	29381	. PLATE, DOUBLER	1		XBFZZN
3/1-	AK66H	07707	. RIVET(GMS SPEC. 7000721-23)(AP)	6		XBFZZN
3/1-44	4001168-1	29381	. PLATE, DOUBLER	2		XBFZZN
3/1-	AK64H	07707	. RIVET, BLIND(GMS SPEC. 7000721-22)(AP)	13		XBFZZN
3/1-45	6001345-501	29381	. HINGE PAN ASSEMBLY	4		XBFZZN
3/1-46	MS35191-278	96906	. SCREW(AP)	4		XBFZZN
3/1-	MS27183-41	96906	. WASHER(AP)	4		XBFZZN
3/1-	MS21044-N3	96906	. NUT(AP)	4		XBFZZN
3/1-	AD44H	07707	. RIVET(GMS SPEC. 7000721-4)(AP)	10		XBFZZN
3/1-47	4001203-1	29381	. BRACE, ANGLE	2		XBFZZN
3/1-	AD68H	07707	. RIVET(GMS SPEC. 7000721-9)(AP)	13		XBFZZN
3/1-48	4001305-i	29381	. BRACE ANGLE	1		XBFZZN
3/1-	AD68H	07707	. RIVET(GMS SPEC. 7000721-9)(AP)	9		XBFZZN
3/1-49	4001412-1	29381	. BREAKER, FROST	3		XBFZZN
3/1-	AK66H	07707	. RIVET(GMS SPEC. 7000721-23)(AP)	9		XBFZZN
3/1-50	6000972-502	29381	. KEEPER	3		PAFZZN
3/1-51	MS51922-1	96906	. NUT(AP)	2		XBFZZN
3/1-	MS27183-10	96906	. WASHER(AP)	2		XBFZZN
3/1-52	6001348-501	29381	. SHIM, KEEPER	3		XBFZZN
3/1-	AD68H	07707	. RIVET(GMS SPEC. 7000721-9)(AP)	2		XBFZZN
3/1-53	6001798-2	29381	. GUSSET PLATE, CORNER	1		XBFZZN
3/1-	AK66H	07707	. RIVET(GMS SPEC. 7000721-23)(AP)	6		XBFZZN
3/1-	AD66H	07707	. RIVET(GMS SPEC. 7000721-8)(AP)	15		XBFZZN
3/1-54	6001797-1	29381	. GUSSET PLATE, CORNER	2		XBFZZN
3/1-	AK66H	07707	. RIVET(GMS SPEC. 7000721-23)(AP)	8		XBFZZN
3/1-	AD66H	07707	. RIVET(GMS SPEC. 7000721-8)(AP)	16		XBFZZN
3/1-55	6001798-i	29381	. GUSSET PLATE, CORNER	1		XBFZZN
3/1-	AK66H	07707	. RIVET(GMS SPEC. 7000721-23)(AP)	6		XBFZZN
3/1-	AD66H	07707	. RIVET(GMS SPEC. 7000721-8)(AP)	15		XBFZZN
3/1-56	AL56011/2	29381	. DOOR HOLDER	1		XBFZZN
3/1-	AD66H	07707	. RIVET(GMS SPEC. 7000721-8)(AP)	4		XBFZZN
3/1-57	6001964-501	29381	. BRACKET	1		XBFZZN
3/1-58	MS51957-84	96906	. SCREW(AP)	11		XBFZZN
3/1-	MS35338-139	96906	. WASHER(AP)	11		PAFZZN
3/1-	S25B380C51	03481	. NUT, BLIND RIVET(GMS SPEC 7000729-24)(AP)	6		PAFZZN
3/1-	7001299-24	29381	. NUT(AP)	5		PAFZZN
3/2-59	CL-22-KA-8L	99862	. CABLE ASSEMBLY, NYLON(GMS SPEC..... 3000172-2)	1		PAFZZN
3/2-	AD68H	07707	. RIVET(GMS SPEC. 7000721-9)(AP)	1		XBFZZN
3/2-60	6001963-501	29381	. CHANNEL ASSEMBLY	1		XBFZZN
3/2-61	4001620-1	29381	. BAR, DOOR STOP	1		PAFZZN
3/2-62	MS51959-81	96906	. SCREW(AP)	3		PAFZZN
3/2-	S25B200C51	03481	. NUT, BLIND RIVET(GMS SPEC	3		XBFZZN
			7000729-21)(AP)			
3/2-63	4001621-1	29381	. PIN, DOOR BRACE	1		XBFZZN
3/2-64	4001619-i	96214	. BLOCK	1		XBFZZN
3/2-65	4001576-l	96214	. STOP, DOOR	1		XBFZZN
3/2-	AD66H	07707	. RIVET(GMS SPEC. 7000721-8)(AP)	3		XBFZZN

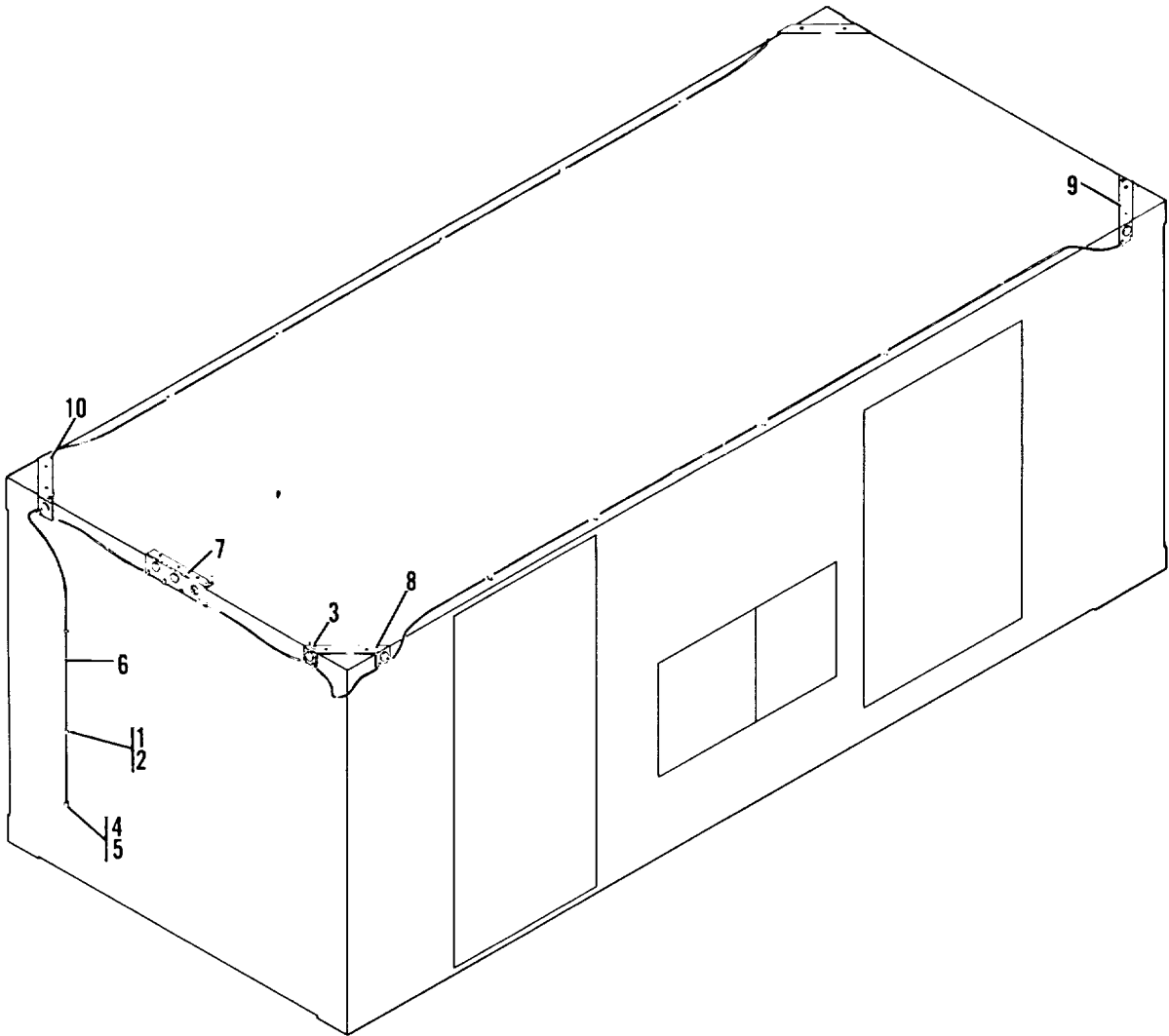


7001196-501

Figure 4 . Emergency Door Installation

FIGURE & INDEX NUMBER	PART NUMBER	FSCM	DESCRIPTION							UNITS PER ASSY	USABLE ON CODE	SMR CODE
			1	2	3	4	5	6	7			
4-	7001196-501	29381	.DOOR INSTALLATION, EMERGENCY (SEE FIG. 1 .FOR NHA)									REF XC----
4-	7001037-501	29381	.DOOR ASSEMBLY, EMERGENCY.....							1		XBFZZN
4-1	MS35191-278	96906	.SCREW(AP)							16		PAFZZN
4-	MS27183-41	96906	.WASHER(AP).....							16		XBFZZN
4-	MS21044-N3	96906	NUT(AP)							16		XBFZZN
4-2	7001179-501	29381	..PANEL ASSEMBLY, EMERGENCY DOOR							1		XA----
4-3	6001421-501	29381	..HINGE ASSEMBLY							4		XBFZZN
4-4	4000414-1	29381	..BOLT(AP)							4		XBFZZN
4-	MS27183-10	96906	..WASHER(AP)							4		XBFZZN
4-	79NTE-040	72962	..NUT(GMS SPEC. 3000061-1)(AP).....							4		XBFZZN
4-5	3000182-1	29381	..SCREW(AP)							2		XBFZZN
4-6	556-100-LO.75-S1	15939	..VALVE, ANTI-BACK DRAFT(GMS SPEC							1		PAFZZN
			O-RFL 6000159-2)									
4-7	4600260-1	29381	...PLATE, PRESSURE RELIEF VALVE.....							1		PAFZZN
4-	AD43H	07707	...RIVET(GMS SPEC. 7000721-3)(AP).....							20		XBFZZN
4-	6001191-501	29381	...HANDLE ASSEMBLY							1		XBFZZN
4-8	6001188-1	29381	...HANDLE, MODIFIED.....							1		XBFZZN
4-9	MS171657	96906	...PIN(AP).....							1		XBFZZN
4-10	A-216SR310-70	95272	...O-RING							1		XBFZZN
4-11	6001191-1	29381	...RING, CONTACT.....							1		XBFZZN
4-12	6001187-1	29381	...SHAFT, LATCH HANDLE							1		XBFZZN
4-13	6001186-1	29381	...SLEEVE, HANDLE SHAFT BEARING.....							1		XBFZZN
4-14	6000982-1	29381	..HANDLE							1		XBFZZN
4-15	MS171659	96906	..PIN(AP).....							1		XBFZZN
4-	7000873-502	29381	..ROD, LATCH ASSEMBLY.....									XBFZZN
4-16	6000979-2	29381	..PIN(AP).....							1		XBFZZN
4-17	6000979-1	29381	..PIN(AP).....							1		XBFZZN
4-	4000888-1	29381	..WASHER(AP)							2		XBFZZN
4-18	MS171530	96906	..PIN(AP).....							1		XBFZZN
4-19	6000984-1	29381	...ROD, LATCH							1		XBFZZN
4-20	4000892-1	29381	...SPACER							1		XBFZZN
4-21	4000892-2	29381	...SPACER							1		XBFZZN
4-	MS20426AD6-7	96906	...RIVET(AP)							4		XBFZZN
4-	6000970-502	29381	..LATCH ARM ASSEMBLY							3		XBFZZN
4-22	MS35674-41	96906	..PIN(AP).....							1		XBFZZN
4-23	GP5-125X625-50	73957	...PIN, GROOVE(GMS SPEC. 3000103-1).....							1		XBFZZN
4-24	6000962-1	29381	...ROLLER-LATCH.....							1		XBFZZN
4-25	6000968-1	29381	...ROLLER-EXTENSION.....							1		XBFZZN
4-26	6000956-2	29381	...ARM LATCH							1		XBFZZN
4-27	6000973-1	29381	..NUT-BEARING SLEEVE							1		XBFZZN
4-	7000873-501	29381	..ROD, LATCH ASSEMBLY							1		XBFZZN
4-28	6000979-1	29381	..PIN(AP).....							2		XBFZZN
4-	4000888-1	29381	..WASHER(AP).....							2		XBFZZN
4-29	MS171530	96906	..PIN(AP).....							1		XBFZZN
4-30	6000985-1	29381	...ROD, LATCH							1		XBFZZN
4-31	4000892-1	29381	...SPACER							1		XBFZZN
4-32	4000892-2	29381	...SPACER							1		XBFZZN
4-	MS20426AD6-7	96906	...RIVET(AP)							4		XBFZZN

FIGURE & INDEX NUMBER	PART NUMBER	FSCM	DESCRIPTION	UNITS PER ASSY	USABLE ON CODE	SMR CODE
4-33	MS35751-163	96906	..BOLT	2		XBFZZN
4-34	MS16228-6	96906	..NUT(AP)	2		XBFZZN
4-	4000877-1	29381	..WASHER(AP)	2		XBFZZN
4-35	6000969-1	29381	..SPACER(AP)	2		XBFZZN
4-36	4000879-1	29381	..SPACER(AP)	2		XBFZZN
4-37	4000880-1	29381	..SHIM, LAMINATED(AP)	2		XBFZZN
4-38	SC-B-595073	80063	..DETENT(AP)	1		PAFZZN
4-39	6000977-1	29381	..HASP(AP)	1		XBFZZN
4-40	MS21316-34	96906	..THUMBSCREW(AP)	1		XBFZZN
4-41	4001035-6	29381	..GASKET	1		XBFZZN
4-	30-00955	00770	..WASHER(GMS SPEC 4000890-1)(AP)	1		XBFZZN
4-42	6001345-501	29381	..HINGE PAN ASSEMBLY	4		XBFZZN
4-	AD44H	07707	..RIVET(GMS SPEC 7000721-4)(AP)	10		XBFZZN
4-43	4001412-1	29381	..BREAKER, FROST	3		XBFZZN
4-	AK66H	07707	..RIVET(GMS SPEC 7000721-23)(AP)	9		XBFZZN
4-44	6000972-501	29381	..KEEPER	3		PAFZZN
4-45	MS51922-1	96906	..NUT(AP)	2		XBFZZN
4-	MS27183-10	96906	..WASHER(AP)	2		XBFZZN
4-46	6001348-501	29381	..SHIM, KEEPER	3		XBFZZN
4-	AD68H	07707	..RIVET(GMS SPEC 7000721-9)(AP)	2		XBFZZN
4-47	4001203-i	29381	..BRACE, ANGLE	3		XBFZZN
4-	AD68H	07707	..RIVET(GMS SPEC 7000721-9)(AP)	13		XBFZZN
4-48	4001305-1	29381	..BRACE ANGLE	1		XBFZZN
4-	AD68H	07707	..RIVET(GMS SPEC 7000721-9)(AP)	9		XBFZZN



7001291-501

Figure 5. Clearance Light Installation

FIGURE & INDEX NUMBER	PART NUMBER	FSCM	DESCRIPTION	UNITS PER ASSY	USABLE ON CODE	SMR CODE
5-	7001291-501	29381	CLEARANCE LIGHT INSTALLATION(SEE FIG.1... FOR NHA)	REF		XC----
5-	7001274-501	29381	.HARNES, RUNNING LIGHTS	1		PBOFFP
5-1	4001335-1	29381	.CLAMP, CABLE	6		XBFZZN
5-2	MS51957-81	96906	.SCREW(AP)	1		PAFZZN
5-	MS15795-810	96906	.WASHER(AP)	1		PAFZZN
5-	S25BI40C51	03481	.NUT, BLIND RIVET(GMS SPEC	2		PAFZZN
			7000729-20)(AP)			
5-	S25B200C51	03481	.NUT, BLIND RIVET(GMS SPEC	7		XBFZZN
			7000729-21)(AP)			
5-3	4001326-1	29381	.SHIM.....	4		XBFZZN
5-4	MS3106-F-125-3P	96906	..CONNECTOR.....	1		PAFZZN
5-5	MS25042-12D	96906	..COVER	1		PAFZZN
5-6	7001274-1	29381	..CABLE, ELECTRICAL - 60 FEET LONG.....	1		XBFZZN
5-7	6001610-501	29381	..LIGHT ASSEMBLY, CLEARANCE	1		PAFZZN
5-8	6001611-502	29381	..LIGHT ASSEMBLY, CLEARANCE	1		PAFZZN
5-9	6001611-501	29381	..LIGHT ASSEMBLY, CLEARANCE	2		PAFZZN
5-10	6001611-503	29381	..ASSEMBLY, CLEARANCE LIGHTS.....	1		PAFZZN

SECTION III

NUMERICAL INDEX

PART NUMBER	STOCK NUMBER (U.S. MARINE CORPS AND U.S. ARMY ONLY)	FIGURE & INDEX NUMBER	QUANTITY PER END ITEM	USMC UNIQUE SMR CODES	USMC SPECIAL ON IND. CODE	USMC REPL. FACTOR
A-2165R310-70		3-11	2			
		4-10				
AD43H		F 1-43	45			
		F 1-68				
		F 4-7				
AD435		F 1-69	8	PAFZZ		
AD44H		F 3-42	29			
		F 3-46				
		F 4-42				
AD62H		F 1-60	6			
		F 2-16				
AD64H		F 1-45	115			
		F 1-59				
		F 1-60				
		F 1-61				
AD645		F 1-53	54			
		F 1-54				
		F 1-67				
AD66H		F 3-53	53			
		F 3-54				
		F 3-55				
		F 3-56				
AD68H		F 3-65				
		F 1-4	179			
		F 1-8				
		F 1-12				
		F 1-16				
		F 1-61				
		F 3-47				
		F 3-48				
		F 3-52				
		F 3-59				
		F 4-46				
		F 4-47				
		F 4-48				
AK43H		F 1-43	8			
AK64H		F 3-44	13			
AK66H		F 3-43	44			
		F 3-49				
		F 3-53				
		F 3-54				
		F 3-55				
		F 4-43				
AL3-575709		1-45	10			
AL56011/2		3-56	1			

PART NUMBER	STOCK NUMBER (U.S. MARINE CORPS AND U.S. ARMY ONLY)	FIGURE & INDEX NUMBER	QUANTITY PER END ITEM	USMC UNIQUE SMR CODES	USMC SPECIAL ON IND. CODE	USMC REPL. FACTOR
CL-22-KA-8L	6780	3-59	1			
FDK-3171		1-69	32			
GP5-125X625-50		3-28	5			
		4-23				
G3370	5975008597982	1-70	1			
H4734-SSW-2-G		1-53	6			
		1-59				
LA-HH-S		1-87	1			
MB1740		1-41	4			
M515795-804	5310007821349	F 1-40	8			
M515795-805	F	1-37	16			
M515795-810	5310005825677	F 5-2	1			
M515795-841		F 1-42	10			
		F 2-4				
M516228-6	5310005847990	3-33	4			
		4-34				
M5171530		3-18	5			
		3-23				
		4-18				
		4-29				
M5171657	5315002989739	3-10	2			
		4-9				
MS171659		3-16	2			
		4-15				
M520426AD6-7		F 3-21	16			
		F 3-26				
		F 4-21				
		F 4-32				
MS20601AD6W8		F 1-4	84			
		F 1-8				
		F 1-12				
		F 1-16				
MS21044-N3		F 3-1	36			
		F 3-46				
		F 4-1				
M521316-34		3-40	2			
		4-40				
M524628-66		1-3	16			
		1-7				
		1-11				
		1-15				
MS25042-12D	5935003967983	5-5	4			
M527183-10		F 1-24	56			
		F 1-29				
		F 1-35				
		F 3-4				
		F 3-7				
		F 3-51				
		F 4-4				
		F 4-45				
M527183-41		F 3-1	36			
		F 3-46				
		F 4-1				
MS3106-F-125-3P		5-4	4			
MS35191-278		3-1	36			
		3-46				
		4-1				
MS35206-282	5305009881726	1-24	28			
		1-29				
MS35338-135		F 1-40	8			

PART NUMBER	STOCK NUMBER (U.S. MARINE CORPS AND U.S. ARMY ONLY)	FIGURE & INDEX NUMBER	QUANTITY PER END ITEM	USMC UNIQUE SMR CODES	USMC SPECIAL ON IND. CODE	USMC REPL. FACTOR
MS35338-139	5310009338121	F 3-58	11			
MS35338-44	5310005825965	F 1-24	32			
		F 1-29				
		F 1-34				
MS35425-40	5310009826827	1-35	1			
MS35674-41		3-27	2			
		4-22				
MS35751-163		3-32	4			
		4-33				
MS51861-26C	5305001473232	2-6	4			
		2-8				
MS51861-45C	5305001473238	1-63	2			
MS51861-49C	5305004770124	1-64	4			
MS51922-1		3-51	4			
		4-45				
MS51957-13	5305000545647	1-40	8			
MS51957-44	5305000546669	2-4	2			
MS51957-45		1-42	8			
MS51957-81		5-2	1			
MS51957-84		3-58	11			
MS51959-81	5305007195021	3-62	3			
MS51959-98	5305007637830	1-58	24	PAFZZ		
MS51967-14		F 1-88	2			
MS51967-2	5310007616882	1-34	4			
NO 1		1-39	8			
QA26-B		1-72	2			
SC-B-595073	5340	3-38	2			
		4-38				
S25B140C51		F 5-2	2			
5258200C51		F 1-55	12			
		F 3-62				
		F 5-2				
525B380C51		F 3-58	6			
525B80CS1		F 1-55	4			
S318B275C51		F 1-58	24			
S6B106		F 1-37	16			
S88120		F 1-42	10			
		F 2-4				
V-90		2-5	2			
1078	5340	1-62	2			
1201-GRY	5930	2-1	2			
2101		2-11	2			
21108		2-17	1			
2111		2-10	1			
2141		2-2	2			
30-00955		F 3-40	2			
		F 4-41				
3000058-1	(SEE MB1740)					
3000103-1	(SEE GP5-125X625-50)					
3000172-2	(SEE CL-22-KA-8L)					
3000182-1		3-5	4			
		4-5				
3000182-2		3-8	2			
3000703-1		1-38	16			
3416A18		1-78	1			
3600001-1	(SEE 5160-98)					
3600002-1		F 1-47	4			
3600008-1	(SEE A192C)					
4000203-I		1-68	1			
4000234-1	(SEE NO 1)					

PART NUMBER	STOCK NUMBER (U.S. MARINE CORPS AND U.S. ARMY ONLY)	FIGURE & INDEX NUMBER	QUANTITY PER END ITEM	USMC UNIQUE SMR CODES	USMC SPECIAL ON IND. CODE	USMC REPL. FACTOR
		1-6				
		1-10				
		1-14				
4000414-1		3-4	20			
		3-7				
		4-4				
4000877-1		F 3-33	4			
		F 4-34				
4000879-1		3-35	4			
		4-36				
4000880-1		3-36	4			
		4-37				
4000888-1		F 3-17	9			
		F 3-22				
		F 4-17				
		F 4-28				
4000892-1		3-20	4			
		3-25				
		4-20				
		4-31				
4000892-2		3-21	4			
		3-26				
		4-21				
		4-32				
4000918-501		1-44	4			
4000993-501	6780	1-82	2	PAFZZ		
4001035-1	5330	3-41	1			
4001035-5	5330	1-20	1			
4001035-6	4-41	1				
4001102-501		1-1	4			
		1-5				
		1-9				
		1-13				
4001127-1	5975	1-33	1			
4001168-1		3-44	2			
4001203-1		1-61	7			
		3-47				
		4-47				
4001268-1		1-83	1			
4001269-1		1-84	1			
4001274-1		1-67	1			
4001299-1		2-3	2			
4001305-1		3-48	2			
		4-48				
4001309-1		2-16	1			
4001326-1		5-3	4			
4001335-1		5-1	6			
4001380-1		1-36	4			
4001400-1		1-43	4			
4001405-502		F 1-81	1			
4001406-502		F 1-74	1			
4001412-1		3-49	6			
		4-43				
4001499-1		3-43	1			
4001576-1		3-65	1			
4001619-1		3-64	1			
4001620-1	5340	3-61	1			
4001621-1		3-63	1			
4600118-1		1-47	4			
4600119-1		1-48	4			

PART NUMBER	STOCK NUMBER (U.S. MARINE CORPS AND U.S. ARMY ONLY)	FIGURE & INDEX NUMBER	QUANTITY PER END ITEM	USMC UNIQUE SMR CODES	USMC SPECIAL ON IND. CODE	USMC REPL. FACTOR
4600122-1		1-46	4			
4600123-501		F 1-45	4			
4600260-1	6780	4-7	1			
4600293- 15	5999	1-65	1			
4600293-16	5999	1-66	1			
4600320-1		1-88	1			
5160-98		1-49	4			
5522623		1-76	2			
556-100-LO.75-51	6780	4-6	1			
6000159-2	(SEE 556-100-LO.75-S1	O-RF				
6000176-1	(SEE AL3-575709)					
6000956-2		3-31	5			
		4-26				
6000962-1		3-29	5			
		4-24				
6000968-1		3-30	5			
		4-25				
6000969-1		3-34	4			
		4-35				
6000970-502		F 3-26	6			
		F 4-21				
6000972-501	5340	4-44	3			
6000972-502	5340004809733	3-50	3			
6000973-1		3-37	2			
		4-27				
6000977-1		3-39	2			
		4-39				
6000979-1		3-22	5			
		4-17				
		4-28				
6000979-2		3-17	2			
		4-16				
6000982-1		3-15	2			
		4-14				
6000984-1		3-24	3			
		4-19				
6000985-1		3-19	3			
4-30						
6001186-1		3-14	2			
		4-13				
6001187-1		3-13	2			
		4-12				
6001188-1		3-9	2			
		4-8				
6001191-1		3-12	2			
		4-11				
6001191-501		F 3-8	2			
		F 4-7				
6001258-501		F 1-44	10			
6001259-1	5330	1 -25	4			
		1-30				
6001259-2	5330	1-26	4			
		1-31				
6001259-501		1-23	1			
6001259-503		1-28	1			
6001294-1		1-54	6			
		1-60				
6001296-501		1-57	1			
6001345-501		3-45	8			
		4-42				

PART NUMBER	STOCK NUMBER (U.S. MARINE CORPS AND U.S. ARMY ONLY)	FIGURE & INDEX NUMBER	QUANTITY PER END ITEM	USMC UNIQUE SMR CODES	USMC SPECIAL ON IND. CODE	USMC REPL. FACTOR
6001351-1 (SEE H4734-SSW-2-G)		4-46				
6001384-1		3-42	1			
6001415-501		F 1-52	2			
6001421-501		3-3	6			
		4-3				
6001457-11		2-13	1			
6001457-12		2-12	2			
6001463-501	5340	1-85	2	PAFZZ		
6001469-1		1-75	1			
6001500-501		2-9	1			
6001602-1		2-15	1			
6001602-2		2-14	1			
6001606-1		1-71	1			
6001606-501		F 1-69	1			
6001610-501	6220	5-7	4			
6001611-501	6220	5-9	8			
6001611-502	6220	5-8	4			
6001611-503		5-10	4			
6001661-501		F 1-35	4			
6001797-1		3-54	2			
6001798-1		3-55	1			
6001798-2		3-53	1			
6001926-501		3-6	2			
6001963-501		3-60	1			
6001964-501		3-57	1			
6006107-40		1-37	16			
7000873-501		F 3-16	2			
		F 4-27				
7000873-502		F 3-21	2			
		F 4-15				
7001027-504	6780	F 1-	1			
7001035-501		F 3-	1			
7001037-501		F 4-	1			
7001060-501		1-51	1			
7001067-501		F 1-	1			
7001067-502		F 1-4	1			
7001067-503		F 1-8	1			
7001067-504		F 1-12	1			
7001081-501		1-19	1			
		F 3-				
7001102-501		F 1-22	1			
7001102-503		F 1-27	1			
7001103-501		1-27	1			
7001108-1		1-4	1			
7001108-2		1-8	1			
7001109-1		1-12	1			
7001109-2		1-16	1			
7001142-501		1-32	1			
7001147-501		1-55	2			
7001169-502		1-56	2			
7001177-501		3-2	1			
7001179-501		4-2	1			
7001190-501	6780	1-74	1			
7001196-501		1-21	1			
		F 4-				
7001199-501		1-17	1			
7001199-502		F 1-56	1			
7001258-1	5340	1-86	4	PAFZZ		
7001261-501		1-18	1			

PART NUMBER	STOCK NUMBER (U.S. MARINE CORPS AND U.S. ARMY ONLY)	FIGURE & INDEX NUMBER	QUANTITY PER END ITEM	USMC UNIQUE SMR CODES	USMC SPECIAL ON IND. CODE	USMC REPL. FACTOR
7001271-501		1-52	1			
7001274-1		5-6	4			
7001274-501	6780	F 5-	1			
7001291-501		1-73	1			
		F 5-				
7001299-24		F 3-58	5			
79NTE-040		F 3-4	20			
		F 3-7				
		F 4-4				
9A	5930	2-7	2			
9B41298		1-81	2			
9B43785		1-77	2			
9B44332		1-79	2			
9B44696		1-80	2			
902781-4 (SEE 7001027-504)						

**AIR FORCE
ARMY
MARINE CORPS**

**T.O. 10M1-8-4-4
TM 11-5895-1044-24P
TM SL-4-08419A**

SECTION IV

REFERENCE DESIGNATION INDEX

(Not Applicable)

RECOMMENDED CHANGES TO EQUIPMENT TECHNICAL PUBLICATIONS



THEN... JOT DOWN THE DOPE ABOUT IT ON THIS FORM, CAREFULLY TEAR IT OUT, FOLD IT AND DROP IT IN THE MAIL!

SOMETHING WRONG WITH THIS PUBLICATION?

FROM: (PRINT YOUR UNIT'S COMPLETE ADDRESS)

DATE SENT

PUBLICATION NUMBER

PUBLICATION DATE

PUBLICATION TITLE

BE EXACT... PIN-POINT WHERE IT IS

PAGE NO.

PARA-GRAPH

FIGURE NO.

TABLE NO.

IN THIS SPACE TELL WHAT IS WRONG AND WHAT SHOULD BE DONE ABOUT IT:

TEAR ALONG PERFORATED LINE

PRINTED NAME, GRADE OR TITLE, AND TELEPHONE NUMBER

SIGN HERE:

DA FORM 2028-2
1 JUL 79

PREVIOUS EDITIONS ARE OBSOLETE.

P.S.—IF YOUR OUTFIT WANTS TO KNOW ABOUT YOUR RECOMMENDATION MAKE A CARBON COPY OF THIS AND GIVE IT TO YOUR HEADQUARTERS.

051069-000